

Ik laat u graag
het ontwerp van
de nieuwbouw
zien,

Lieven de Key



Meer informatie
lievendekey.nl

In samenwerking met:



arons en gelauff
architecten

Nieuwbouwplan | 15 maart 2022

Johan Greivestraat en Piet Mondriaanstraat

Dit ontwerpboek behoort tot het sociaal plan.

In de verdere uitwerking kan het ontwerp, waaronder impressies, plattegronden en oppervlakten nog in beperkte mate wijzigen.



arons en gelauff
architecten





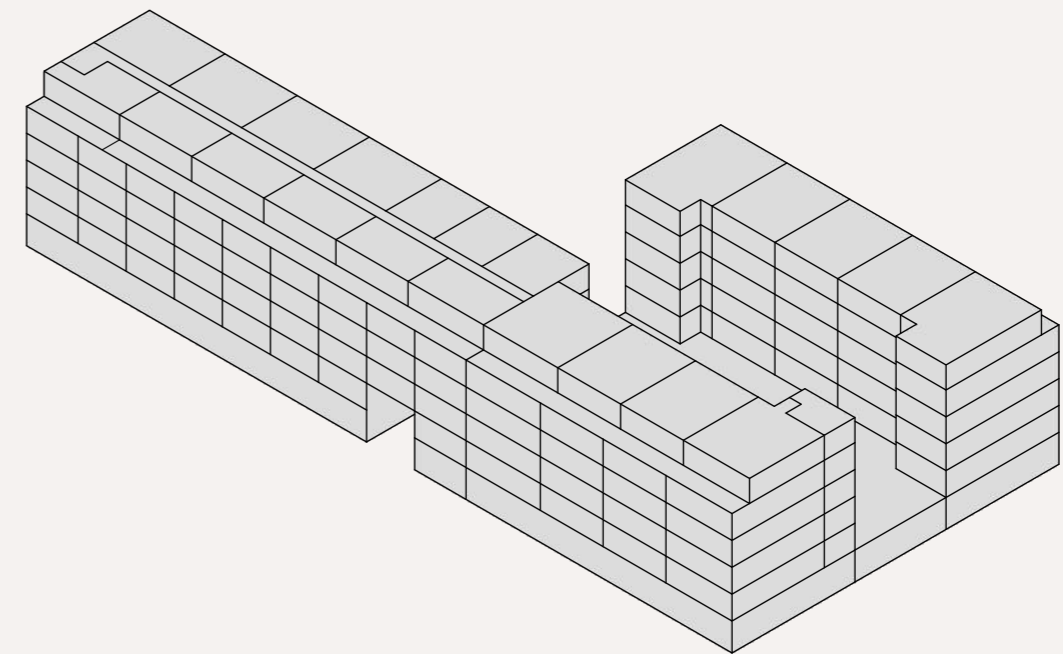
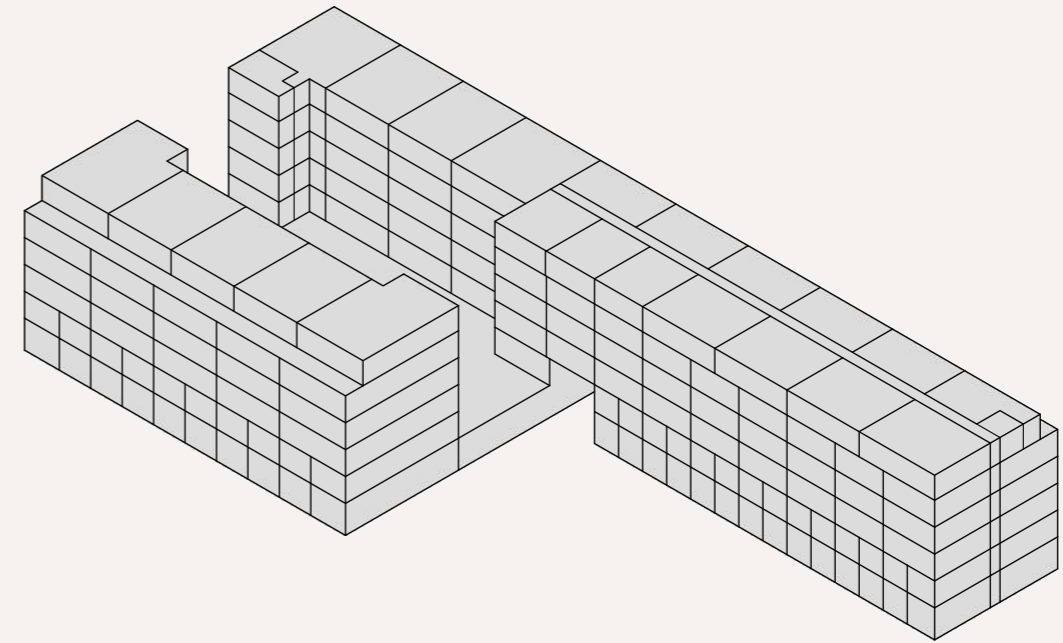




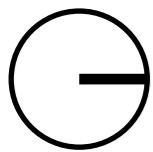
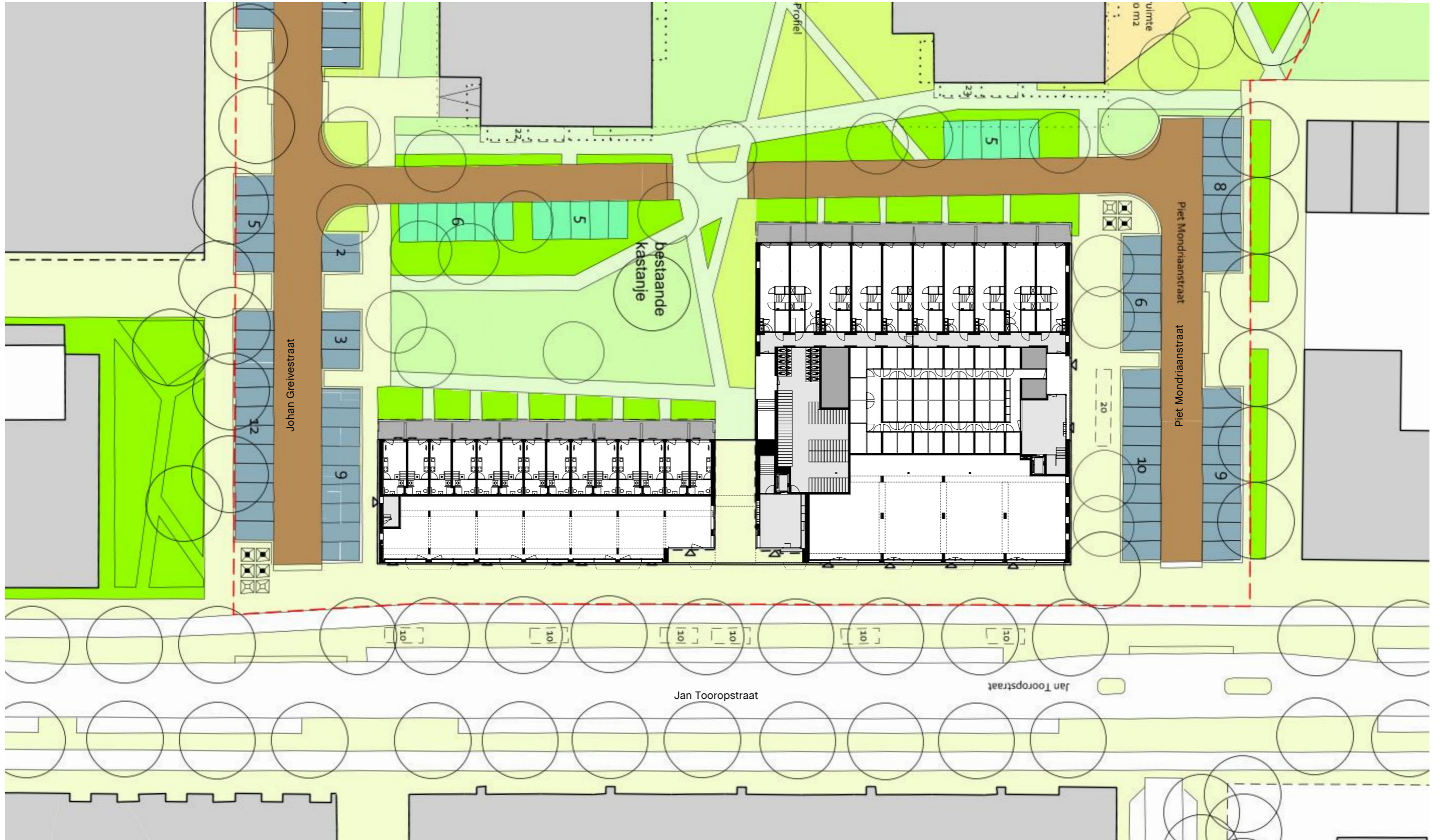




Plattegronden gebouw

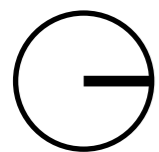
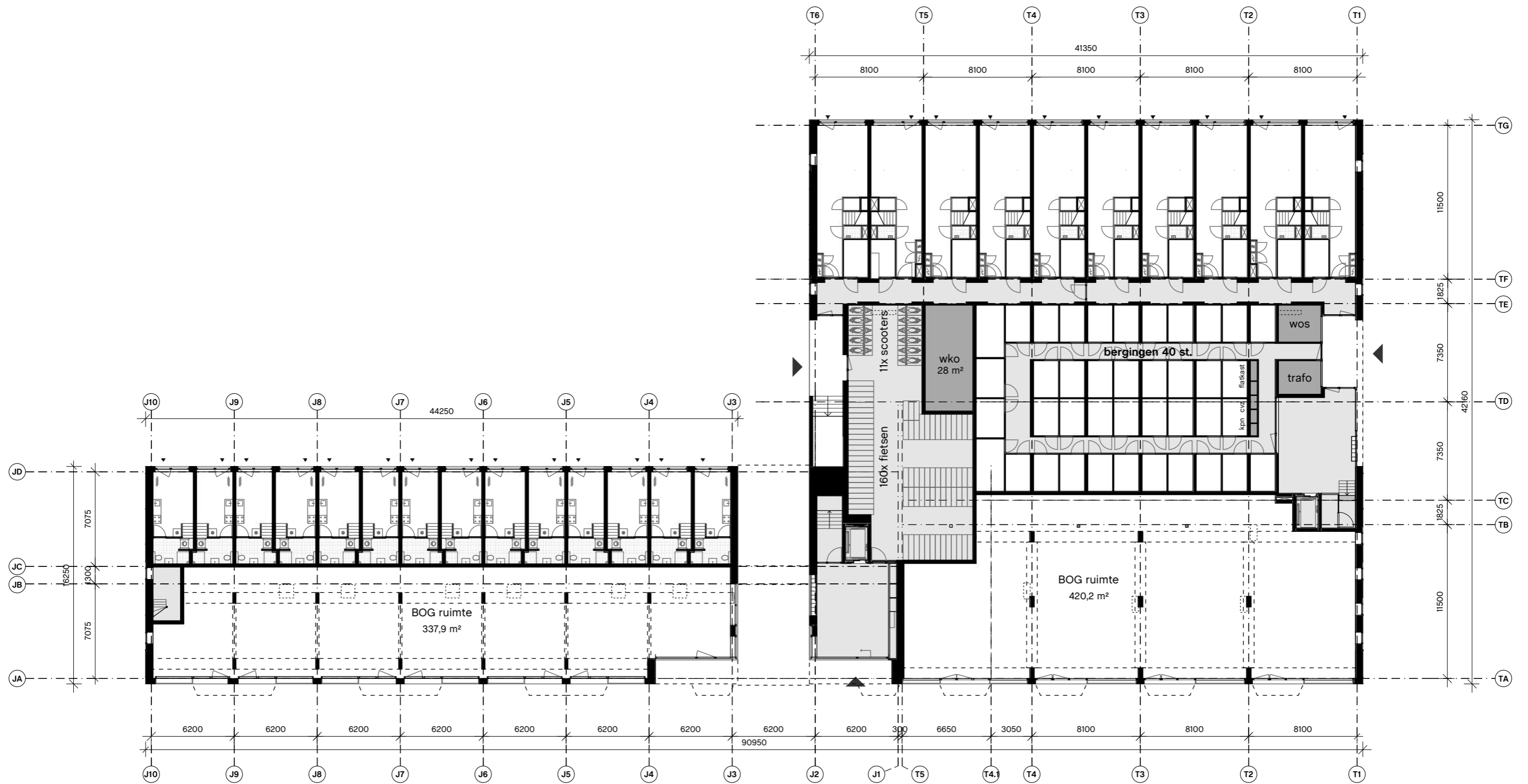


situatie



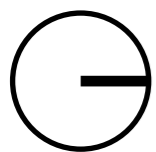
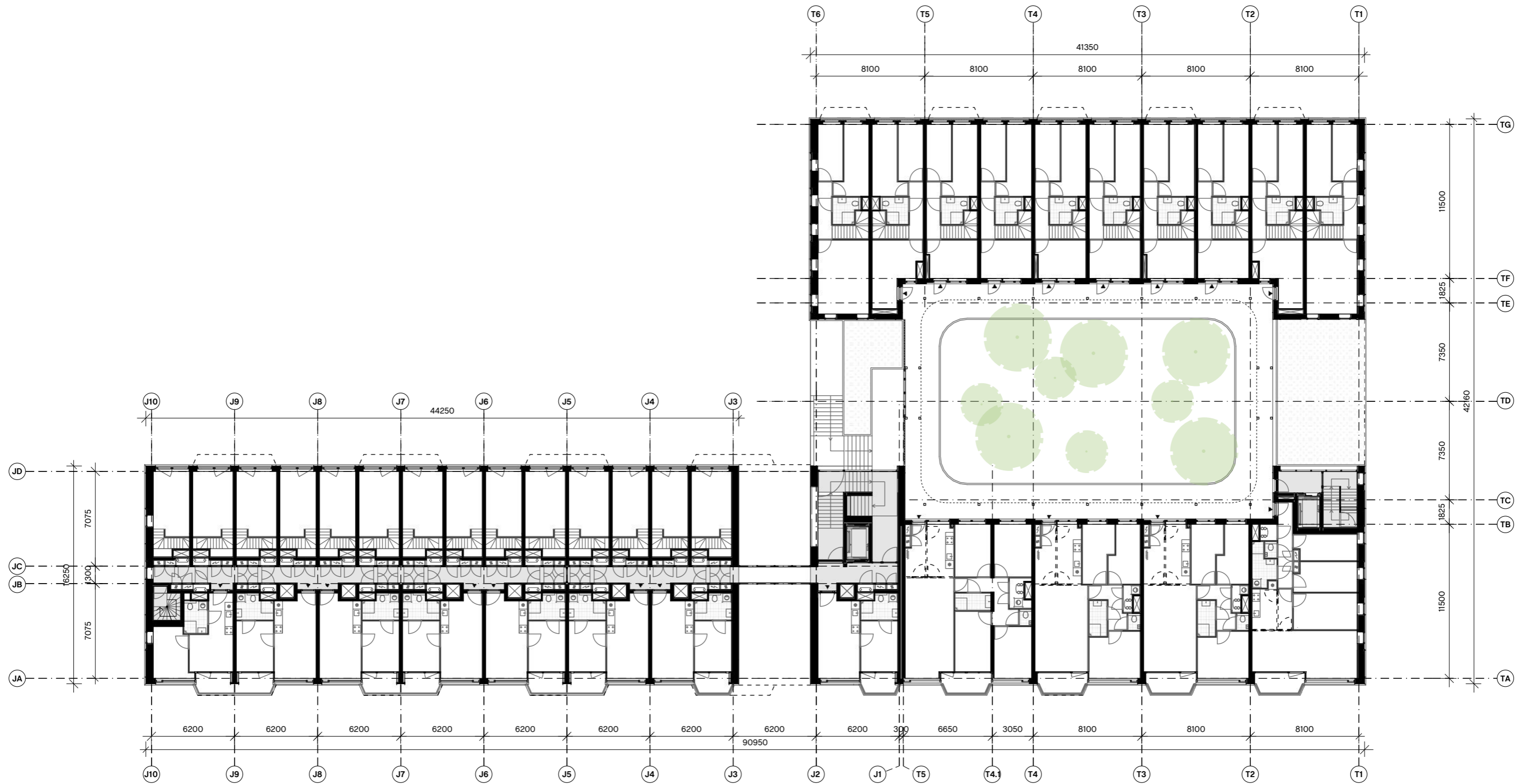
schaal 1:500

begane grond



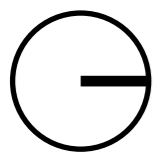
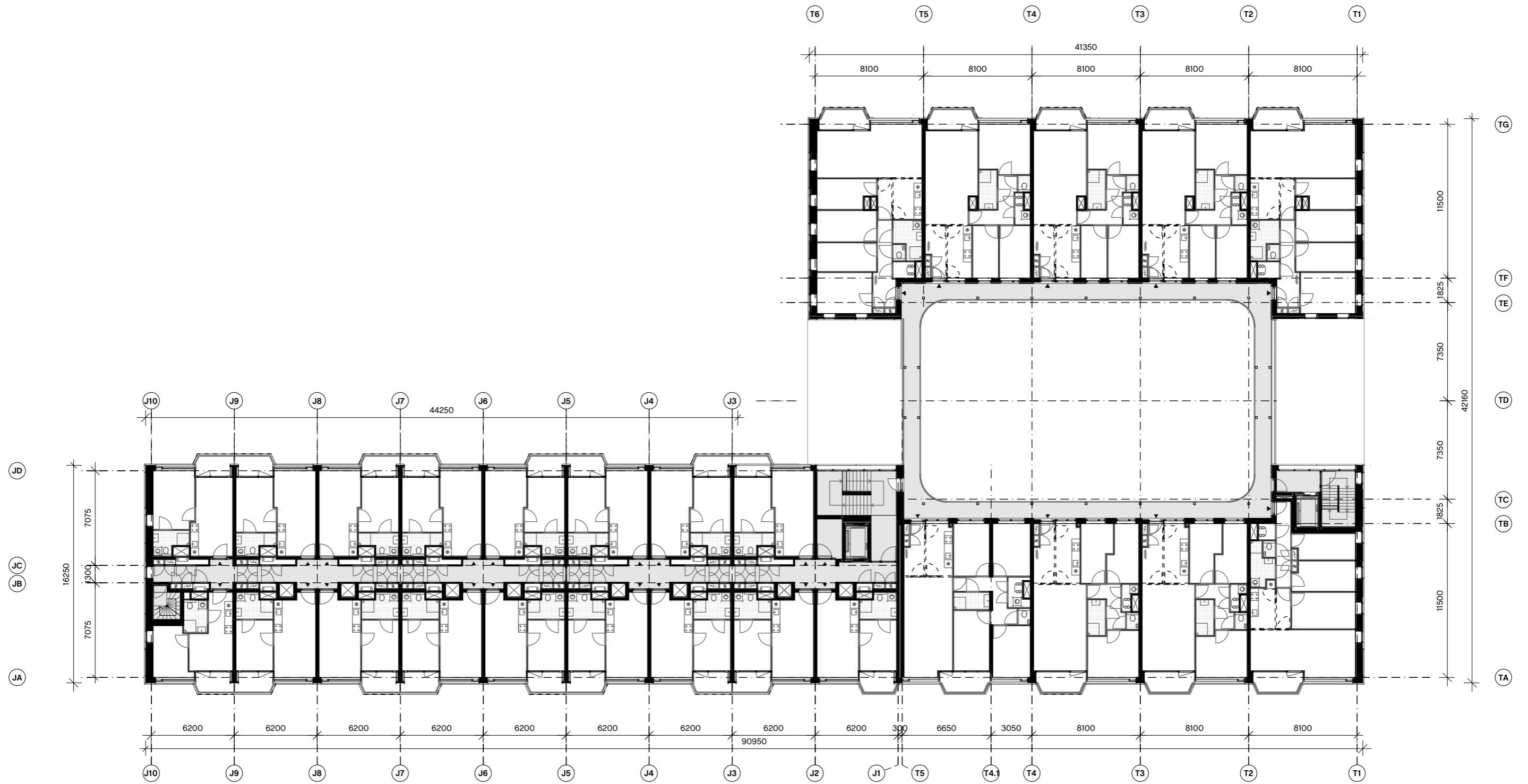
schaal 1:300

1e verdieping



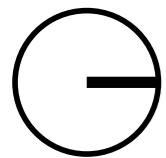
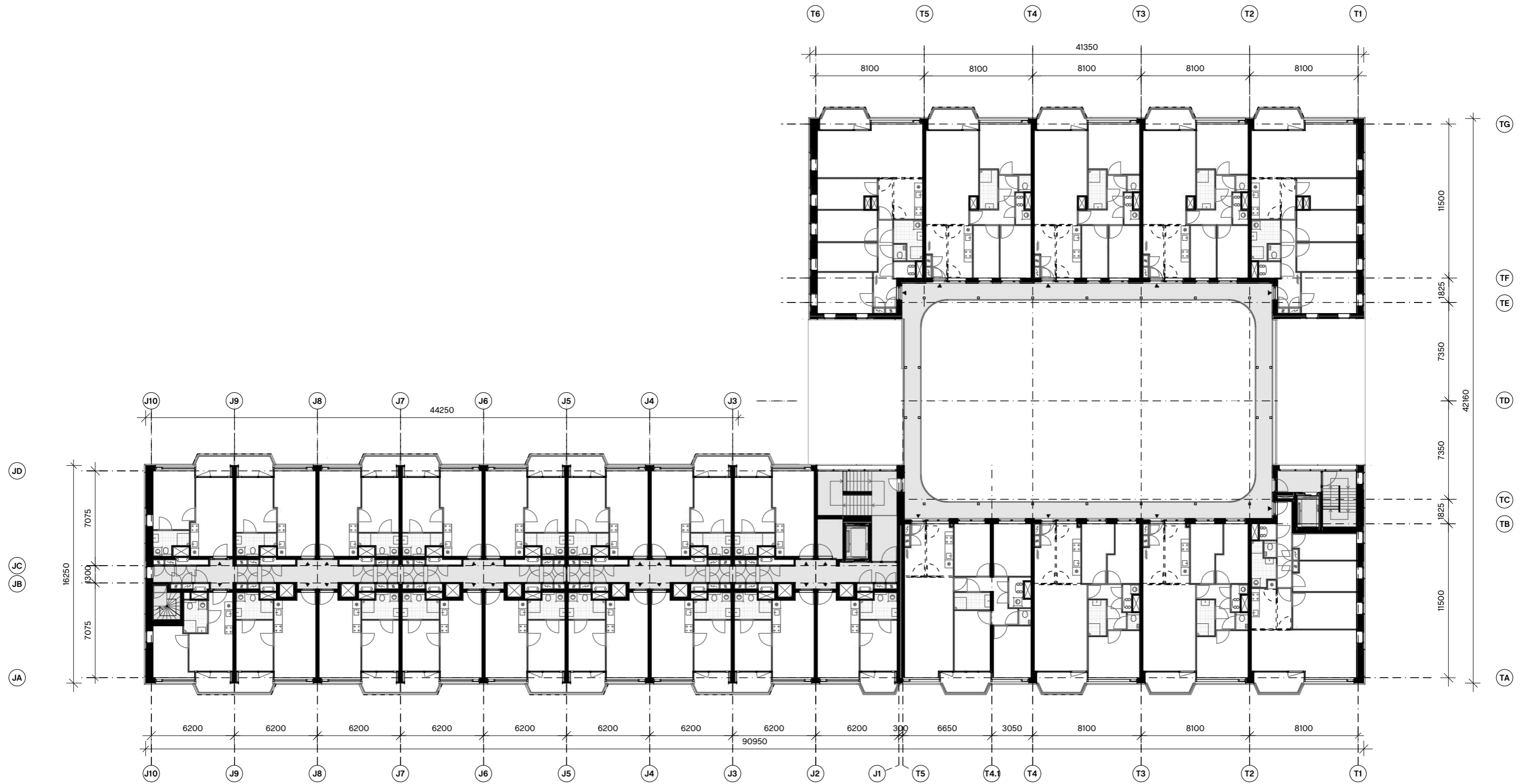
schaal 1:300

2e verdieping



schaal 1:300

3e verdieping

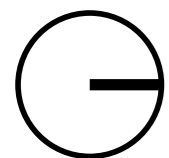
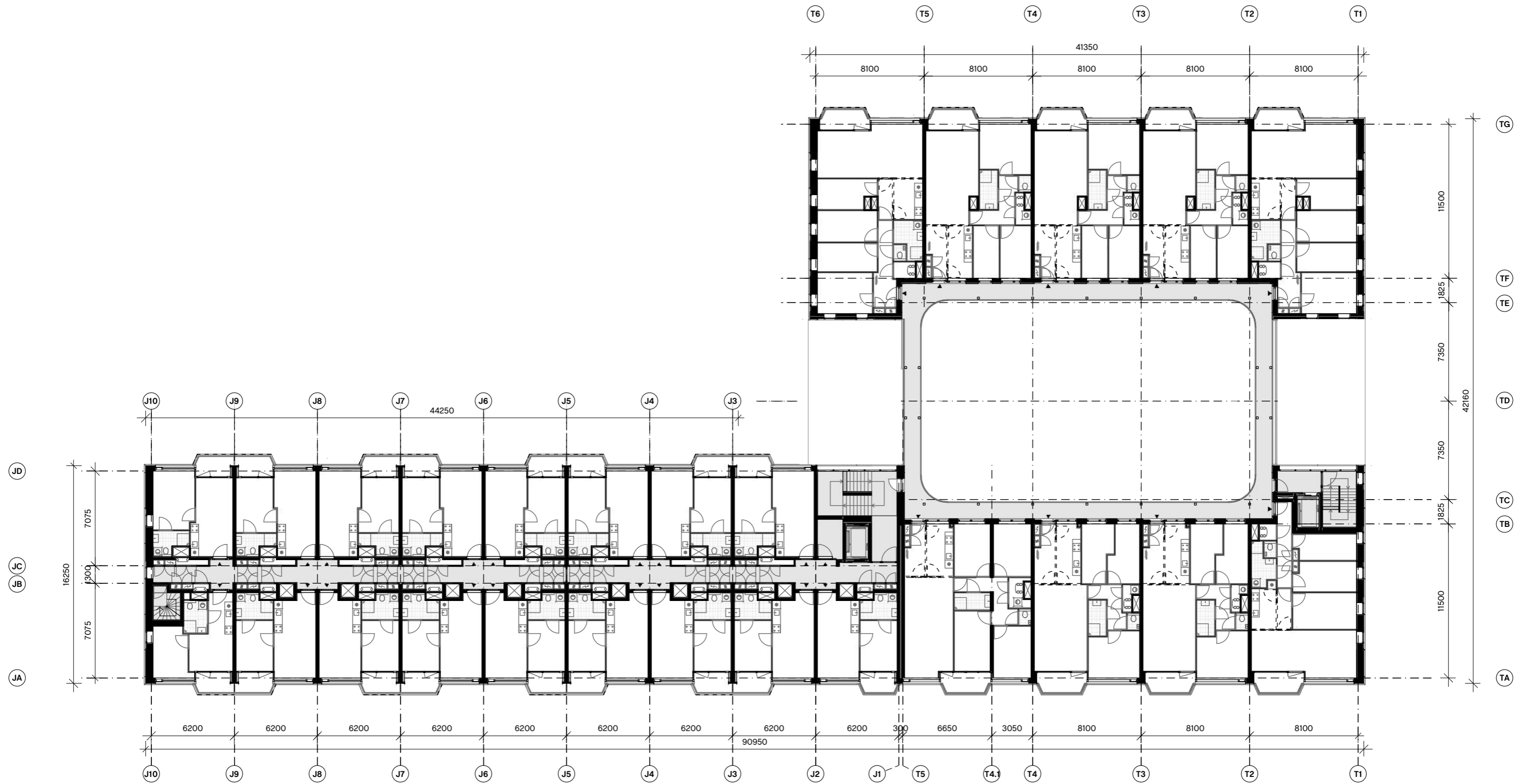


schaal 1:300



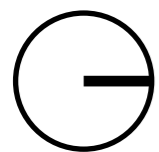
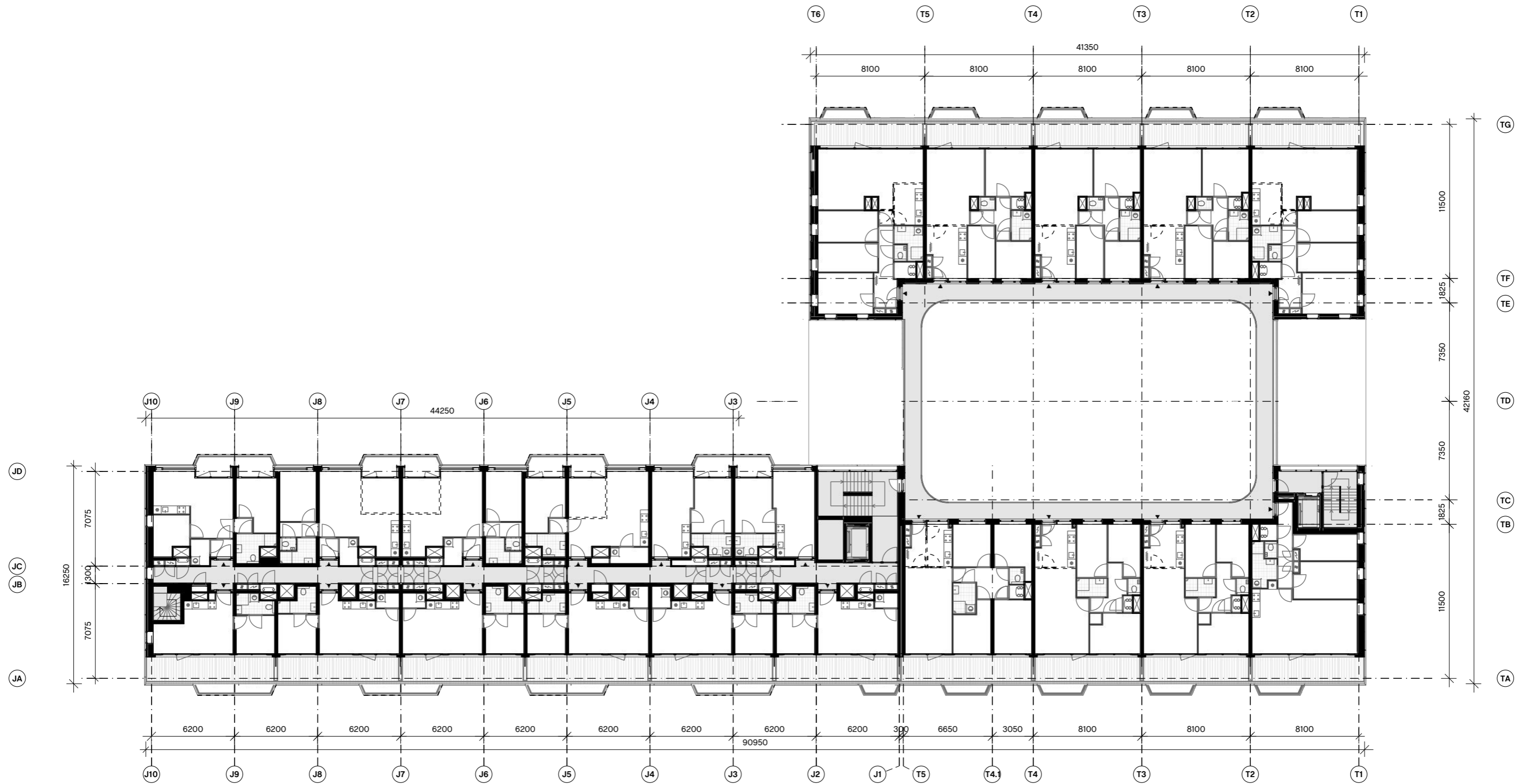
arons en gelauff
architecten

4e verdieping



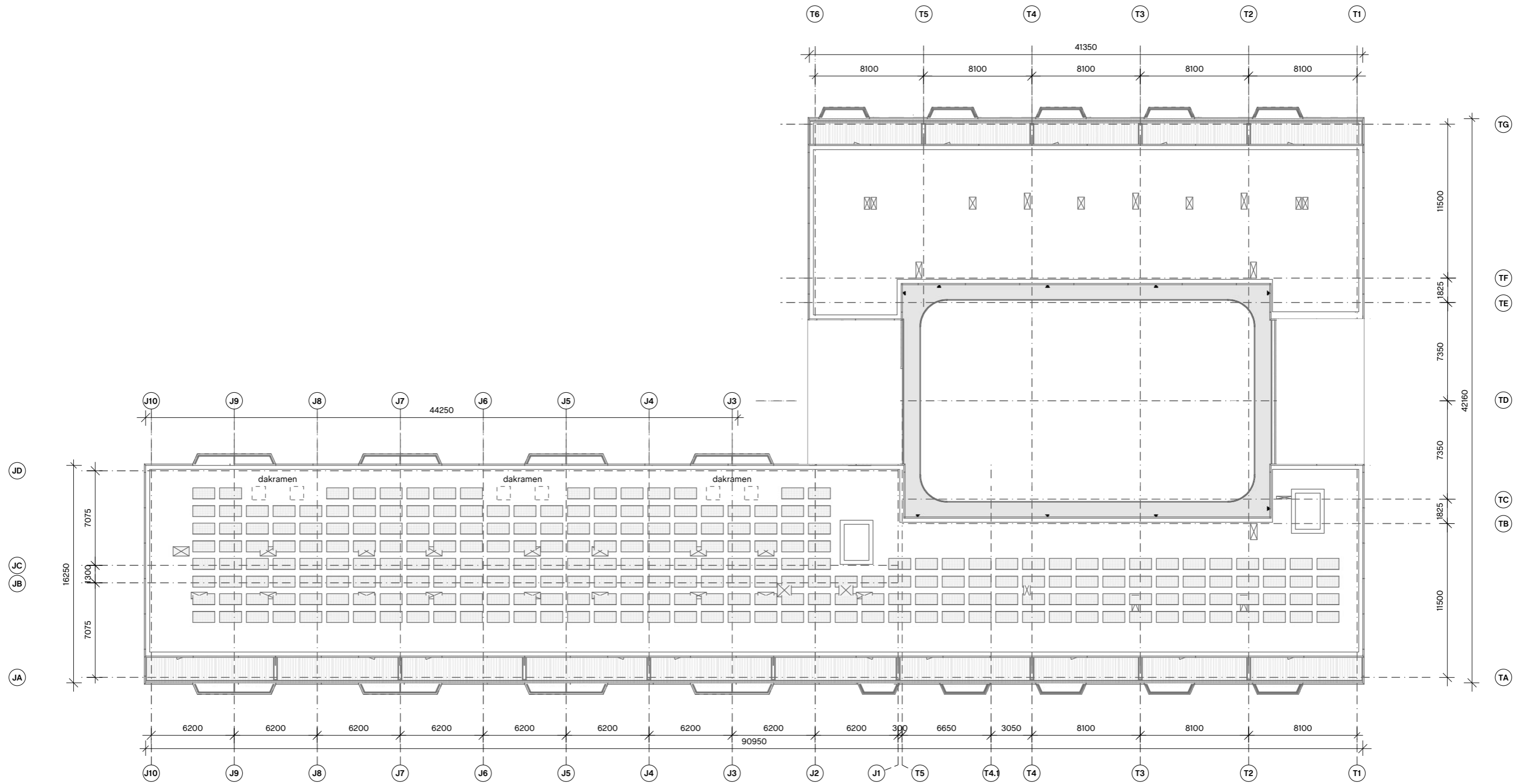
schaal 1:300

5e verdieping

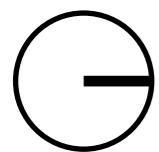


schaal 1:300

dak



Exacte positie zonnepanelen nader te bepalen.



schaal 1:300

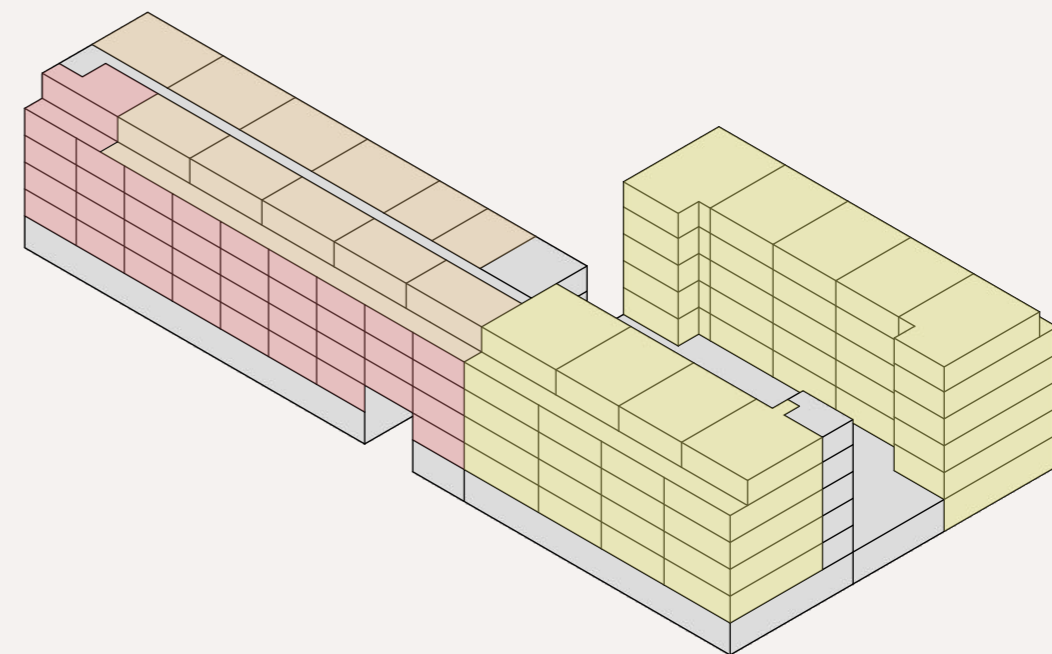
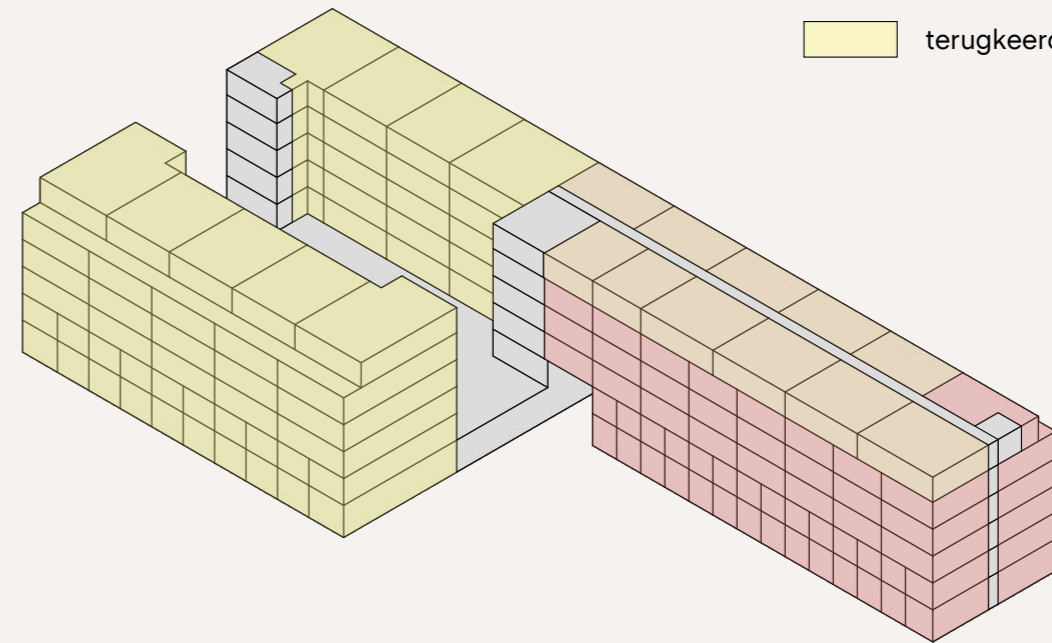




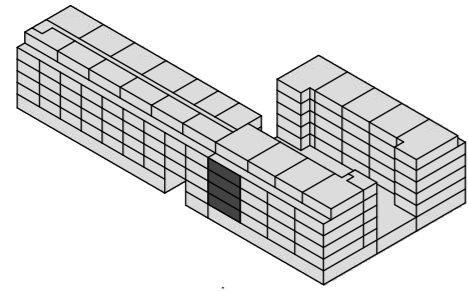


plattegronden
terugkeerderswoningen

- jongeren
- jongeren of terugkeerders
- terugkeerders

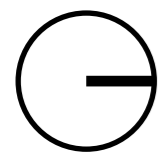
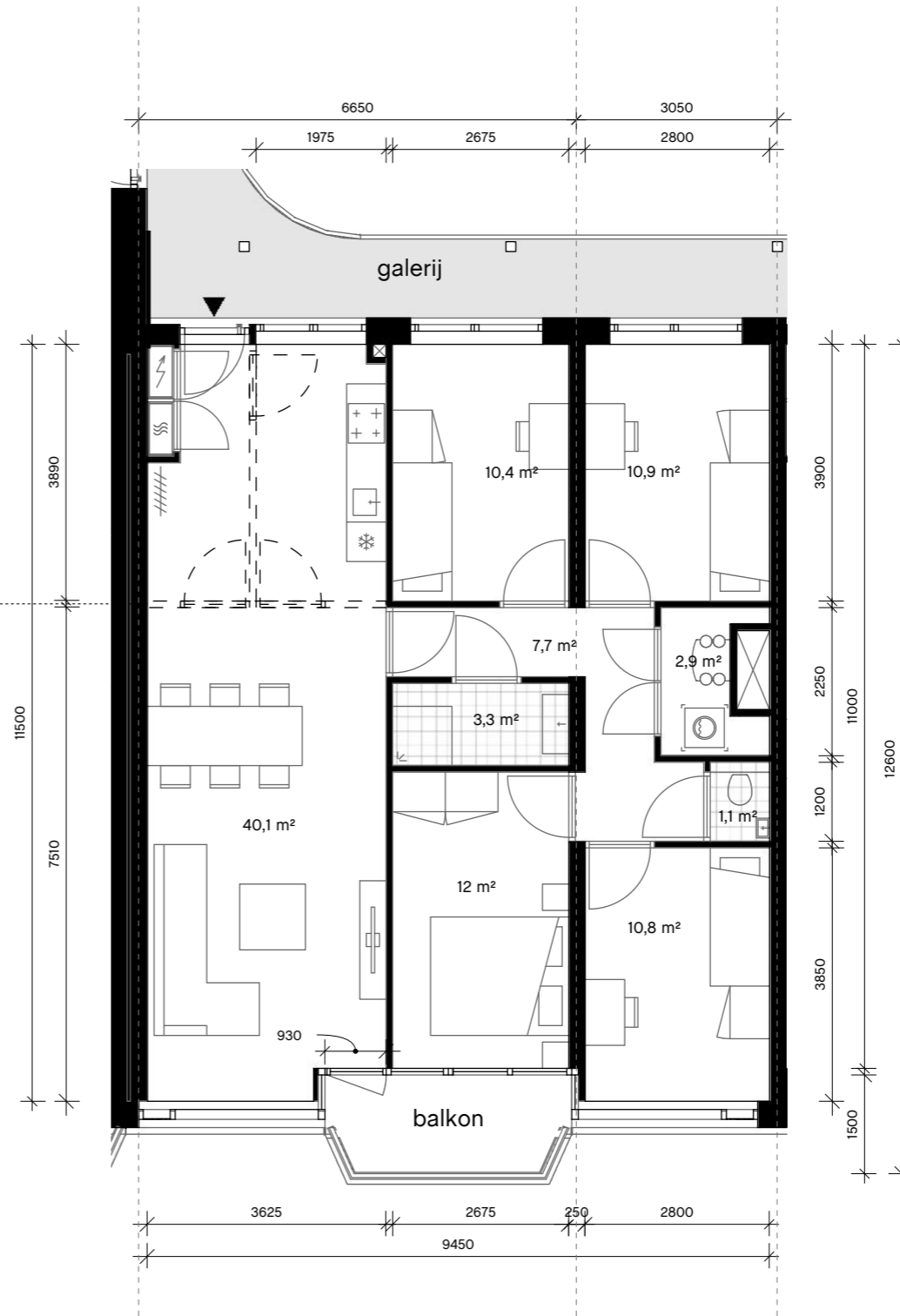


A1



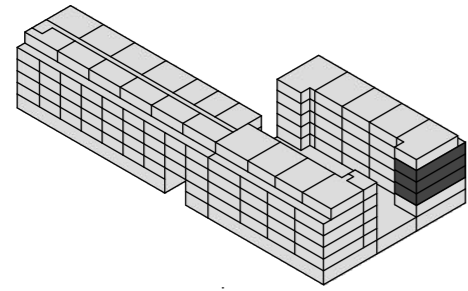
oppervlak	
GO	103,6 m ²
WO	87,5 m ²
aantal	4 st.

Afschermen
keuken wordt als
optie aangeboden
door De Key.

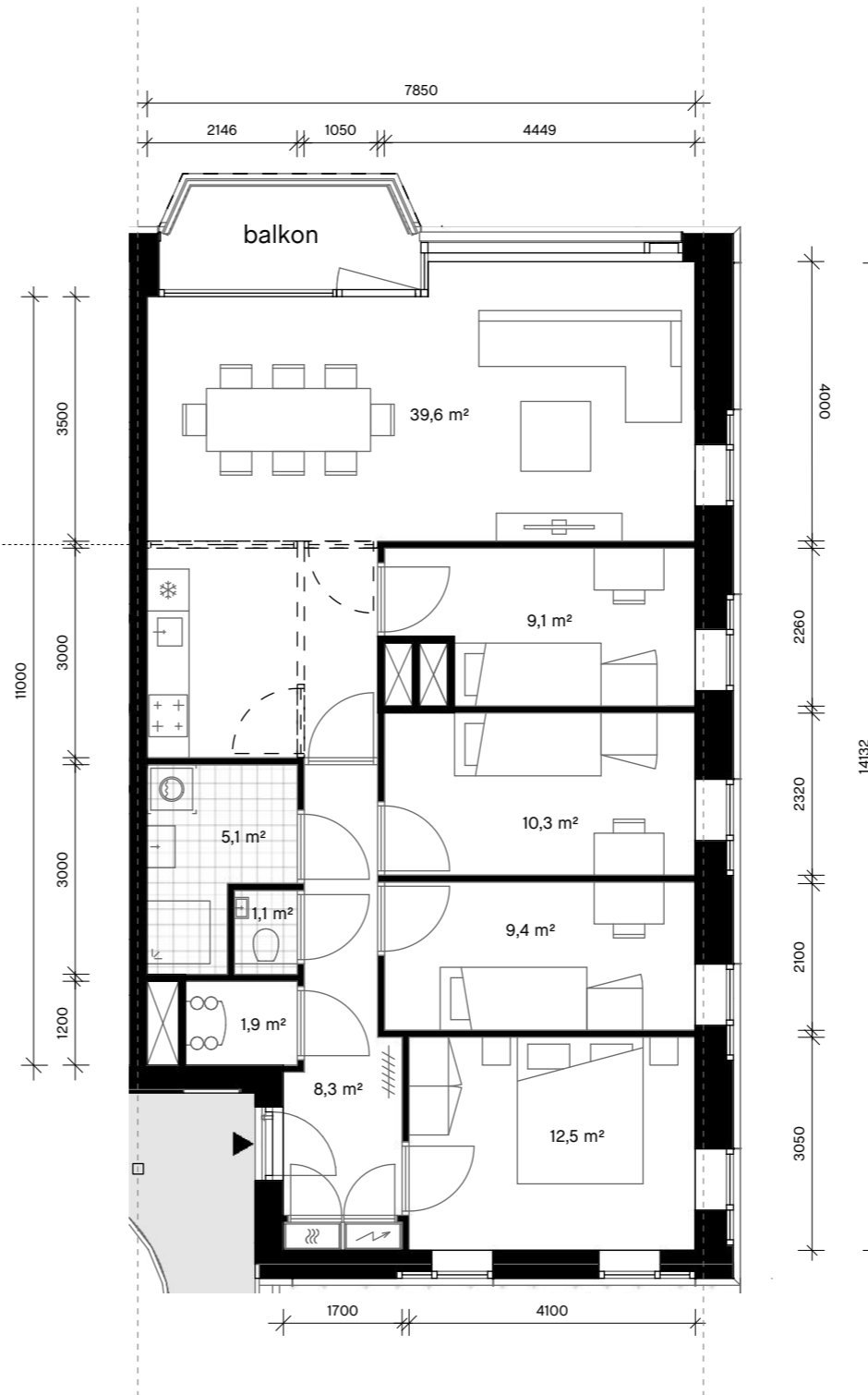


schaal 1:100

A2



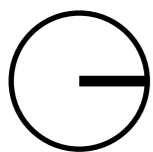
Afschermen
keuken wordt als
optie aangeboden
door De Key.



oppervlak

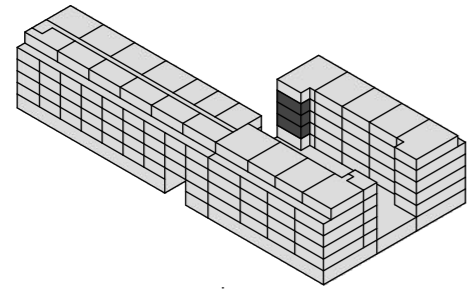
GO 102,0 m²
WO 86,0 m²

aantal 3 st.

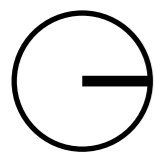
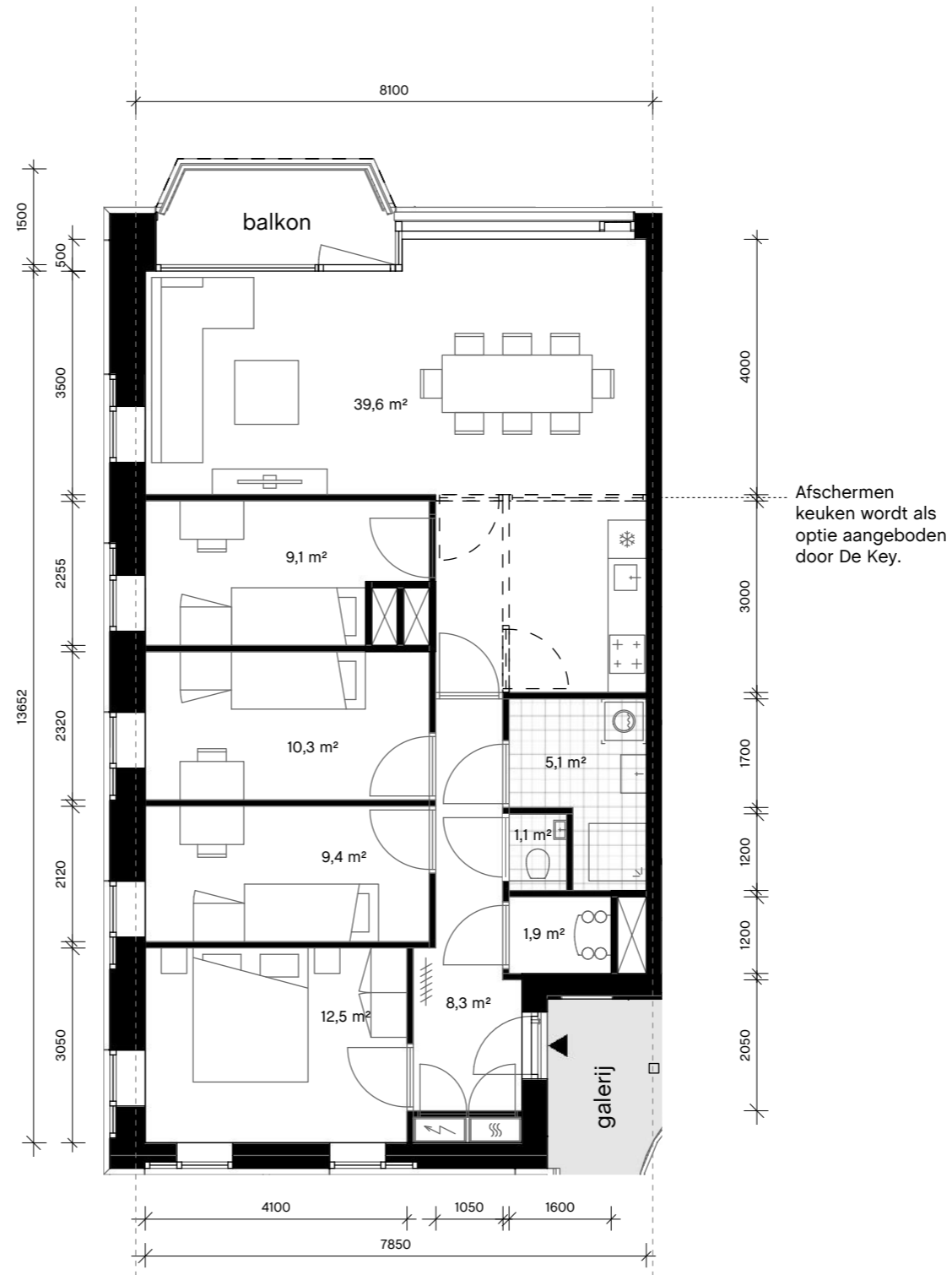


schaal 1:100

A3

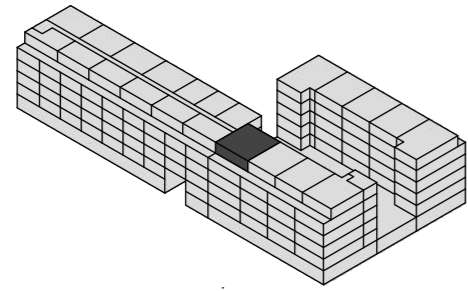


oppervlak
GO 102,0 m²
WO 86,0 m²
aantal 3 st.

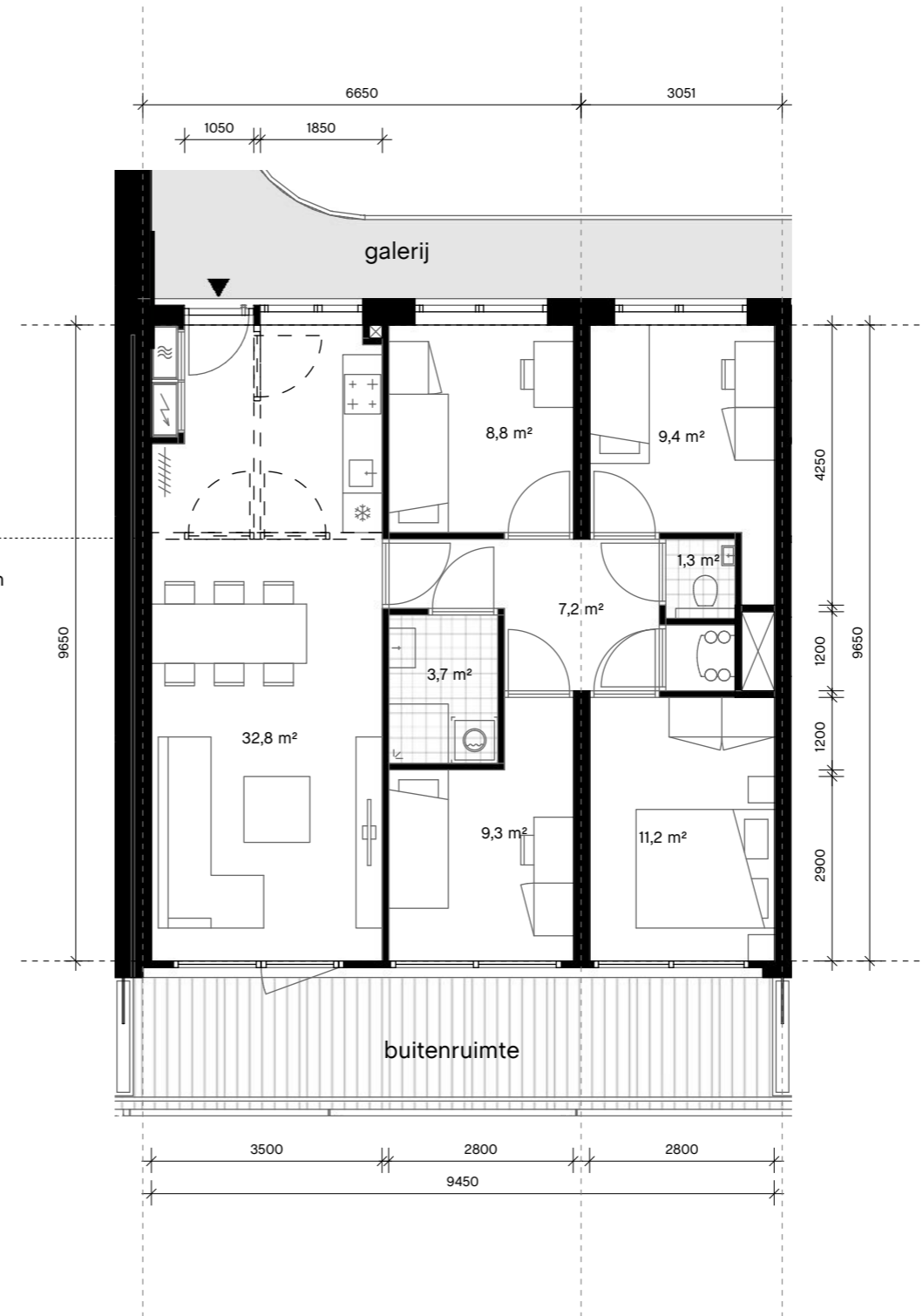


schaal 1:100

B1



Afscheren
keuken wordt als
optie aangeboden
door De Key.

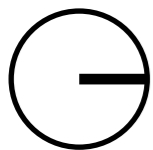


oppervlak

GO 88,5 m²

WO 75,2 m²

aantal 1 st.

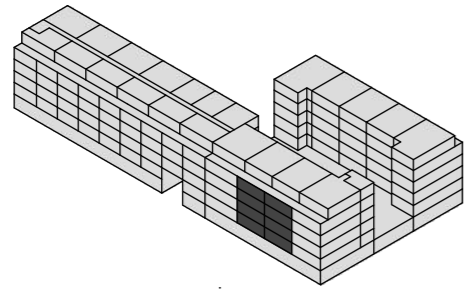


schaal 1:100



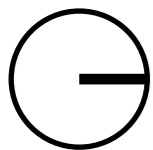
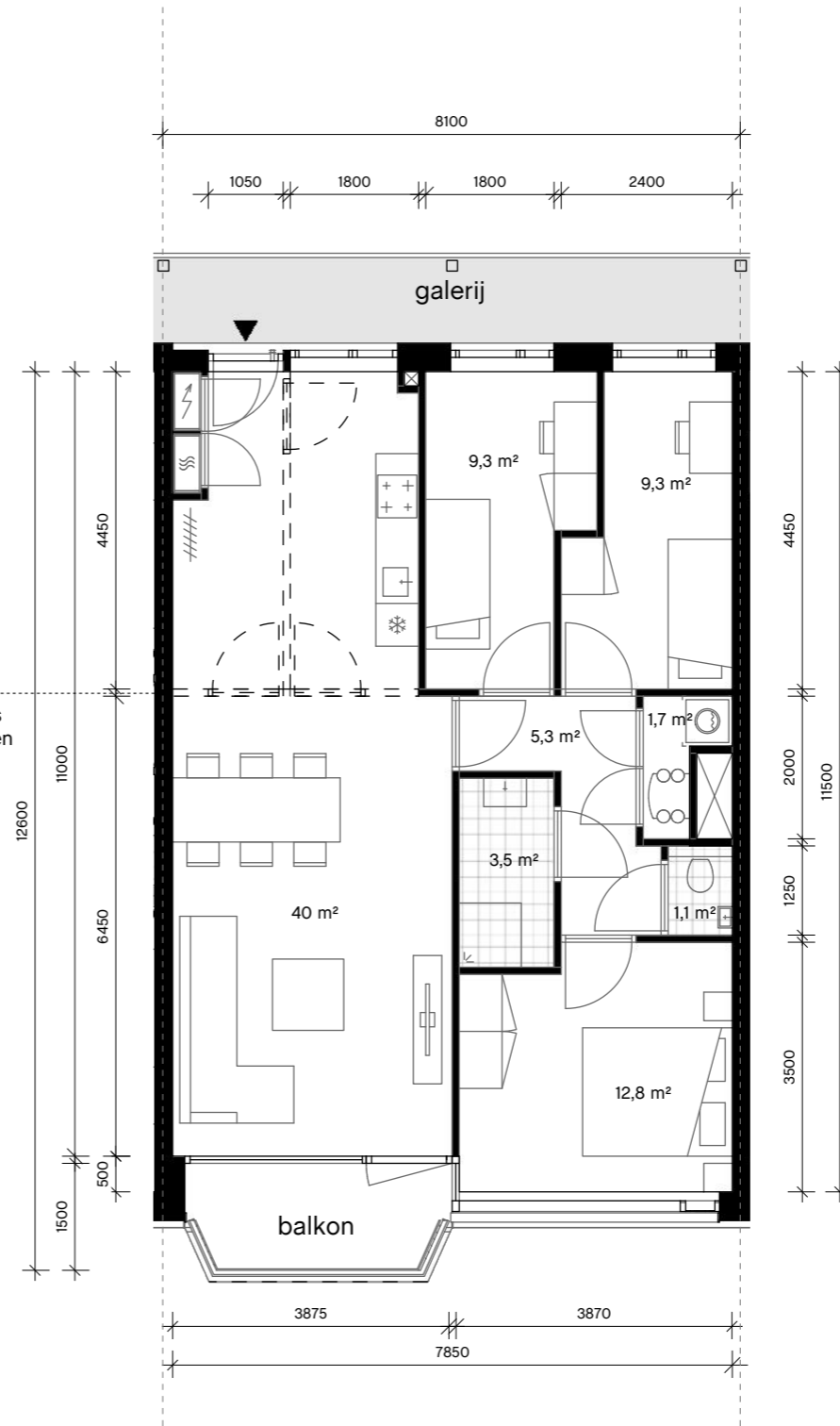
arons en gelauff
architecten

B2



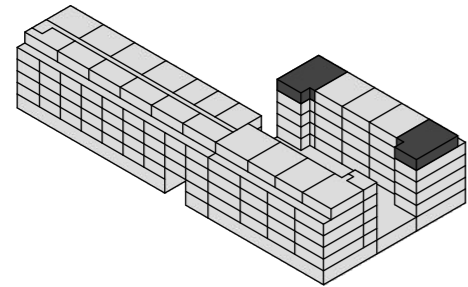
oppervlak	
GO	87,4 m ²
WO	74,9 m ²
aantal	8 st.

Afschermen
keuken wordt als
optie aangeboden
door De Key.



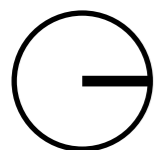
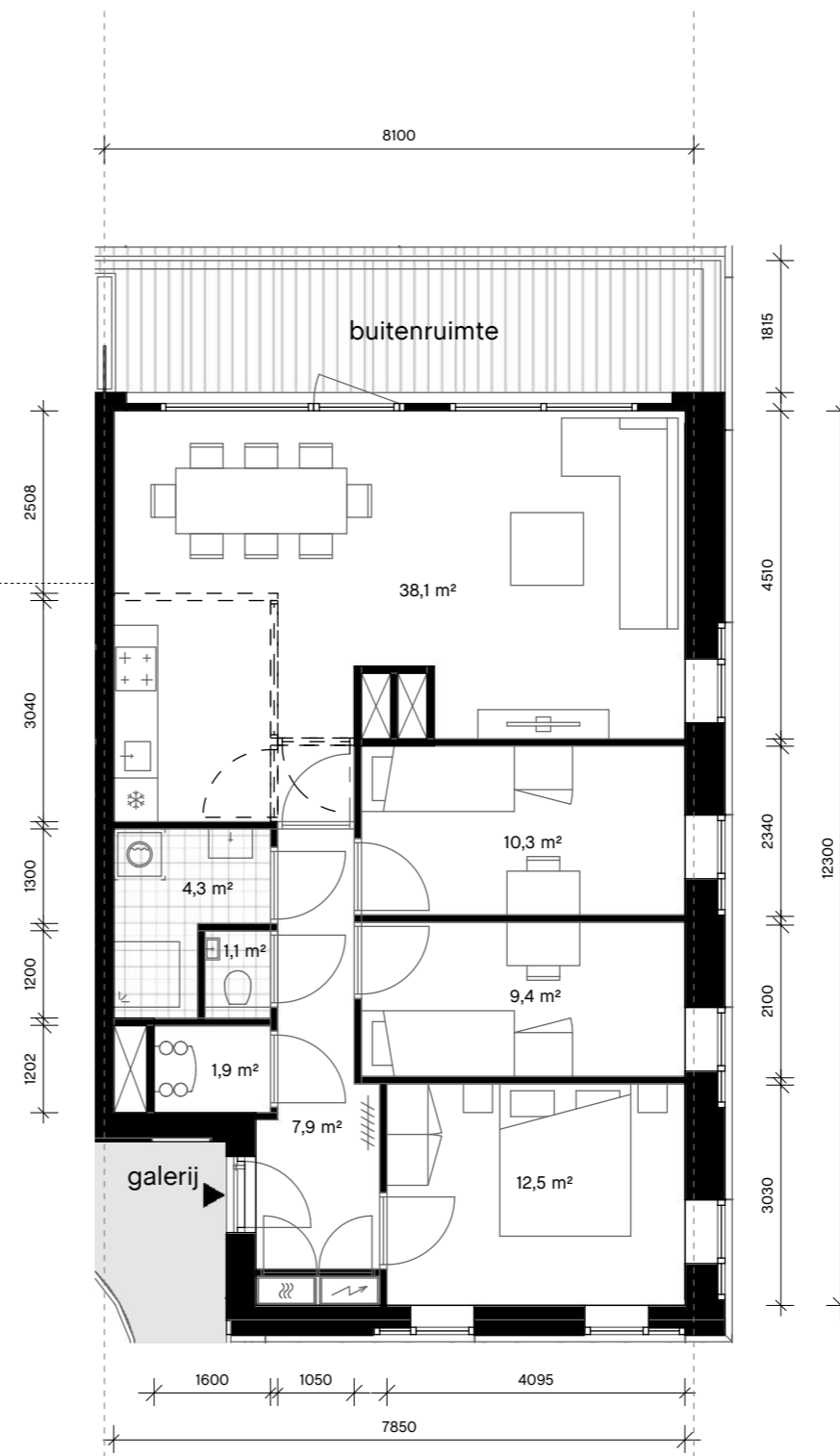
schaal 1:100

B3



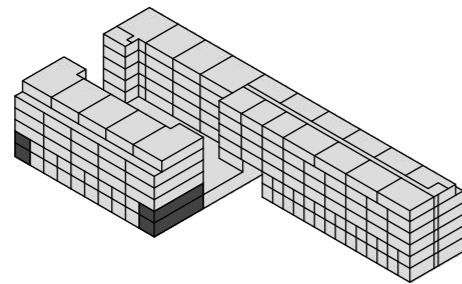
oppervlak	
GO	89,5 m ²
WO	74,6 m ²
aantal	2 st.

Afschermen
keuken wordt als
optie aangeboden
door De Key.



schaal 1:100

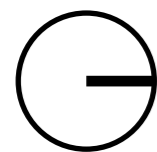
B4



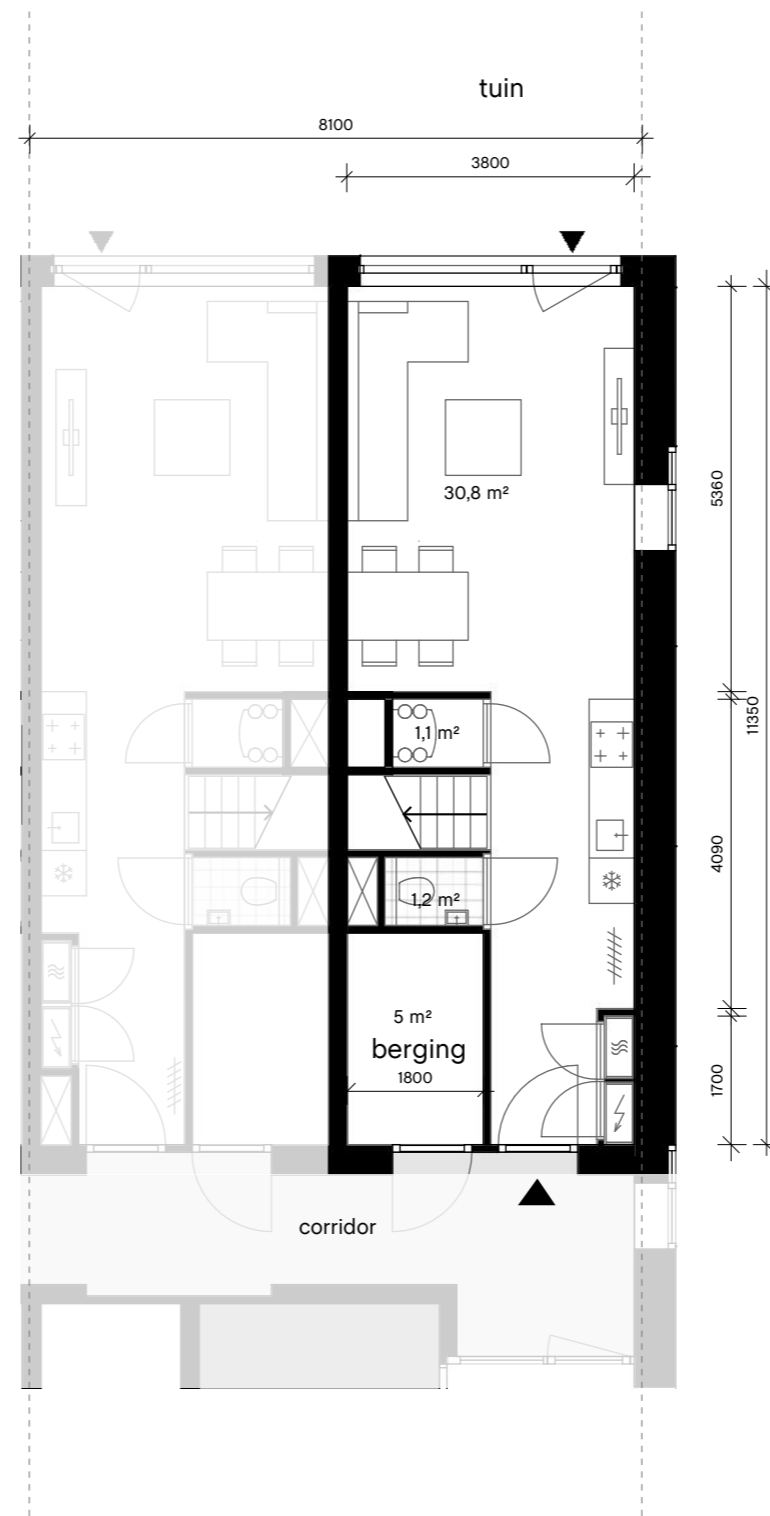
oppervlak

GO 86,7 m²
WO 73,9 m²

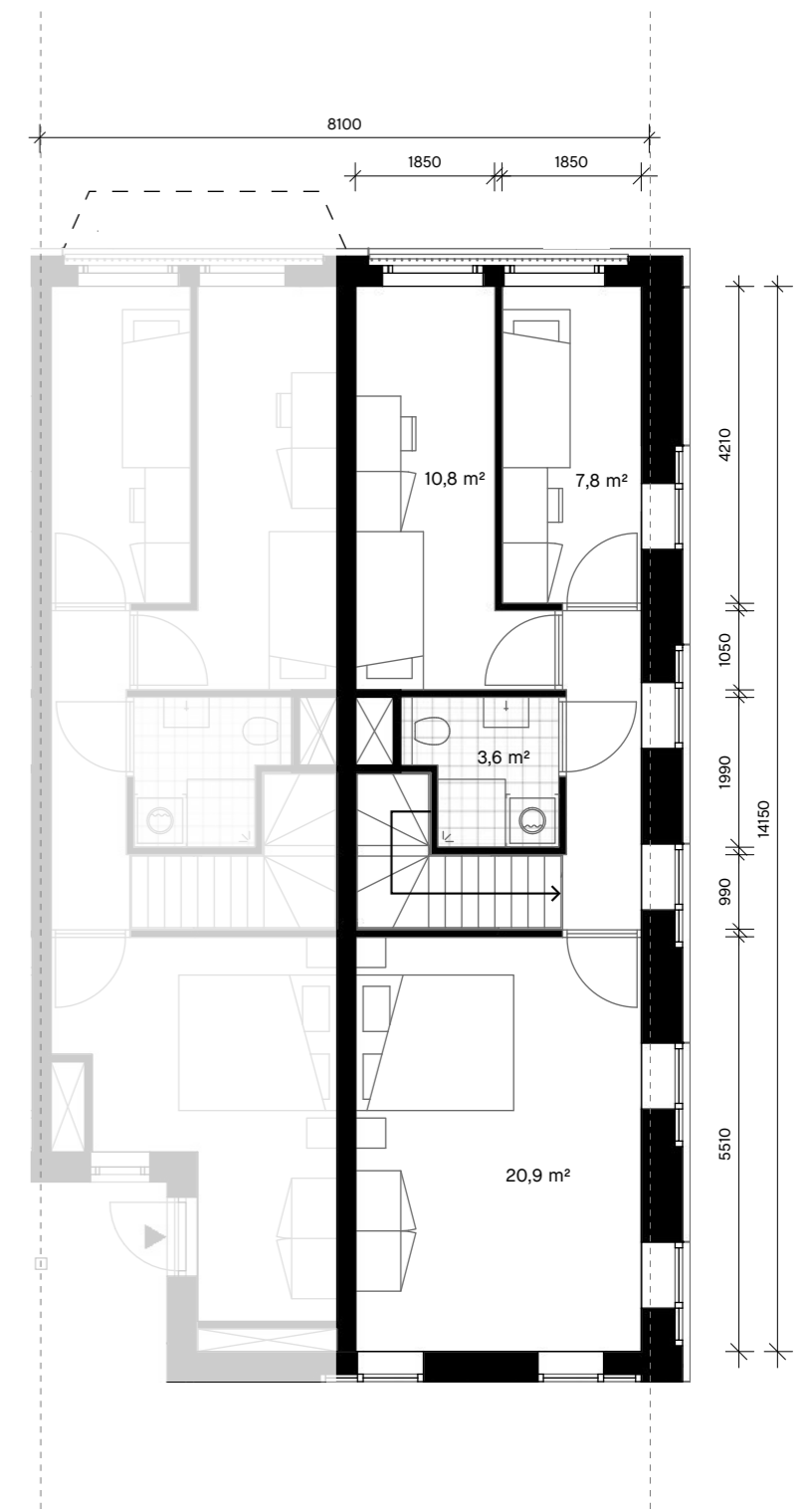
aantal 2 st.



schaal 1:100

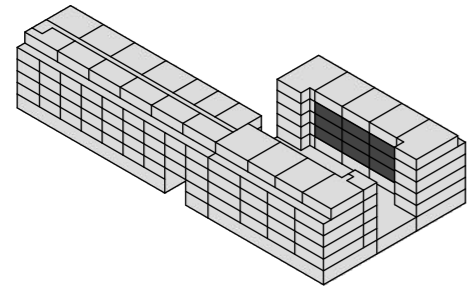


begane grond



eerste verdieping

B5

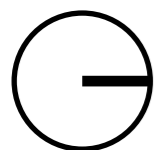
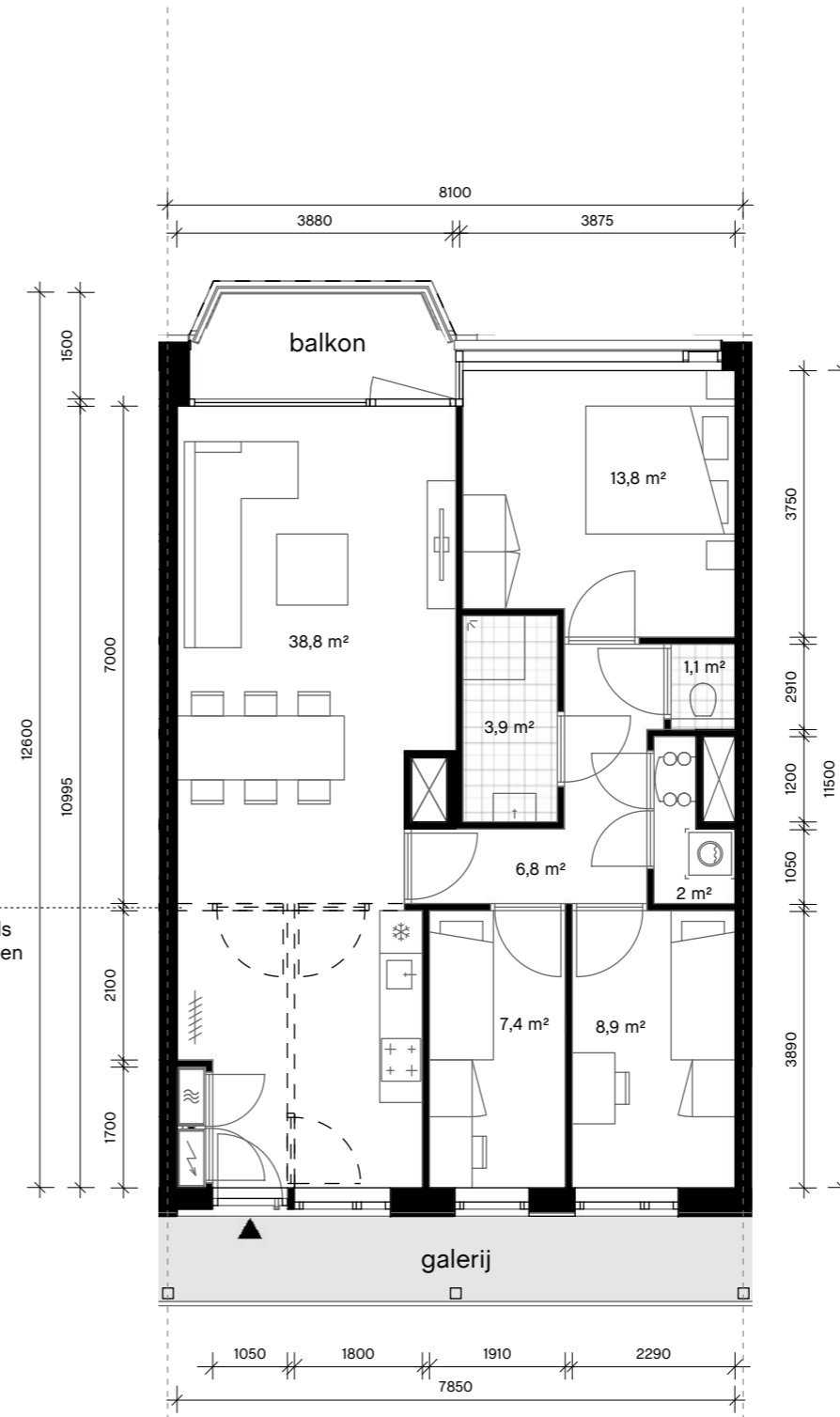


oppervlak

GO 86,7 m²
WO 72,8 m²

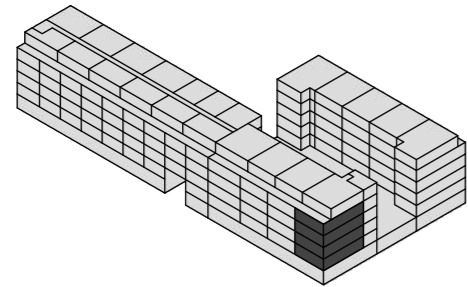
aantal 9 st.

Afschermen
keuken wordt als
optie aangeboden
door De Key.

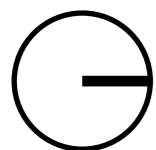
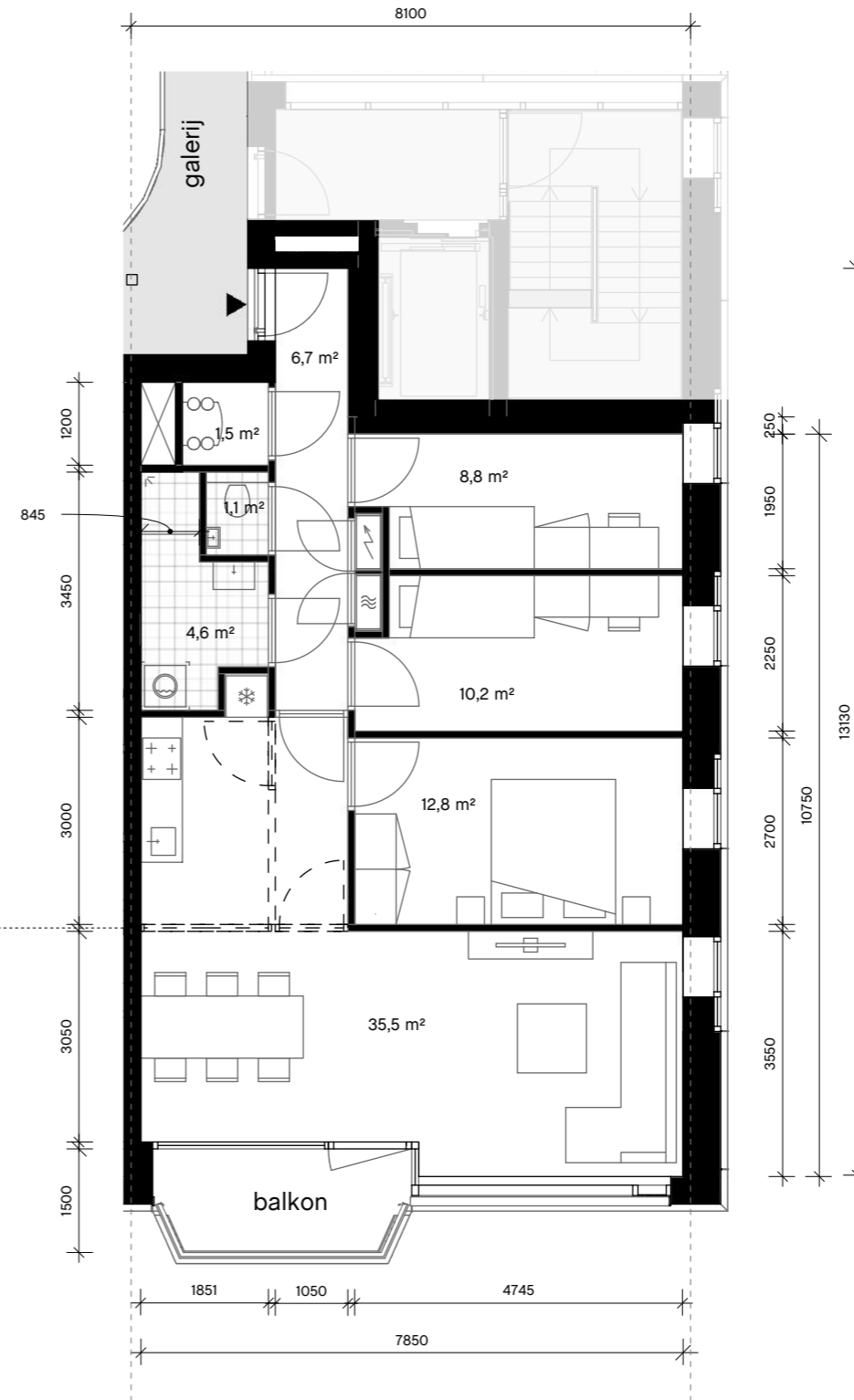


schaal 1:100

B6



oppervlak	
GO	87,1 m ²
WO	71,9 m ²
aantal	4 st.

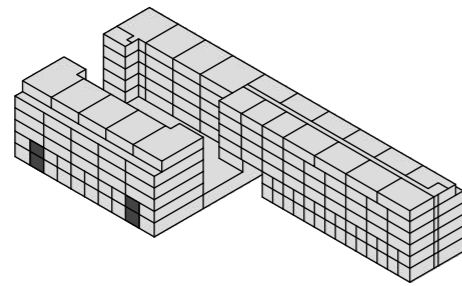


schaal 1:100



arons en gelauff
architecten

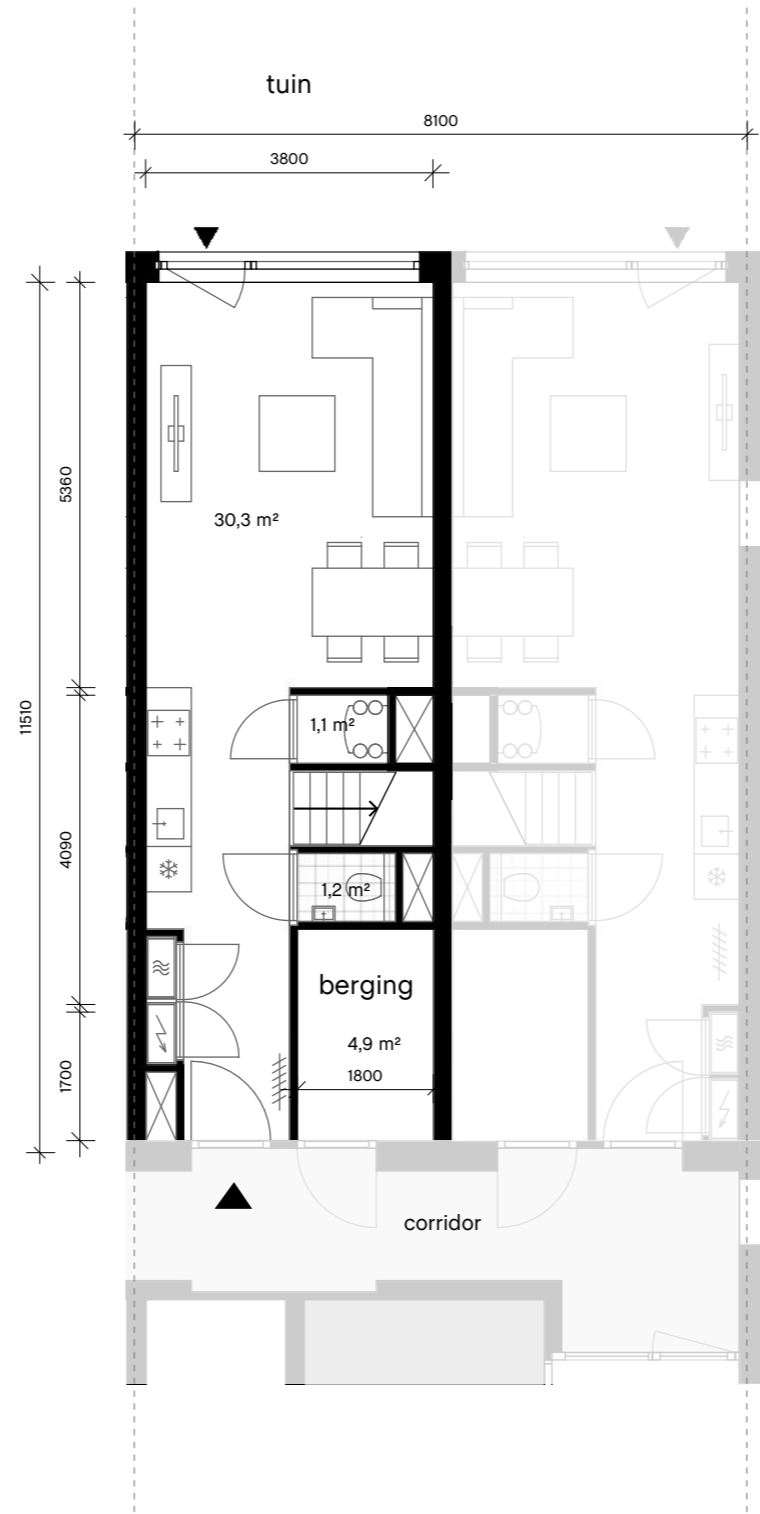
C1



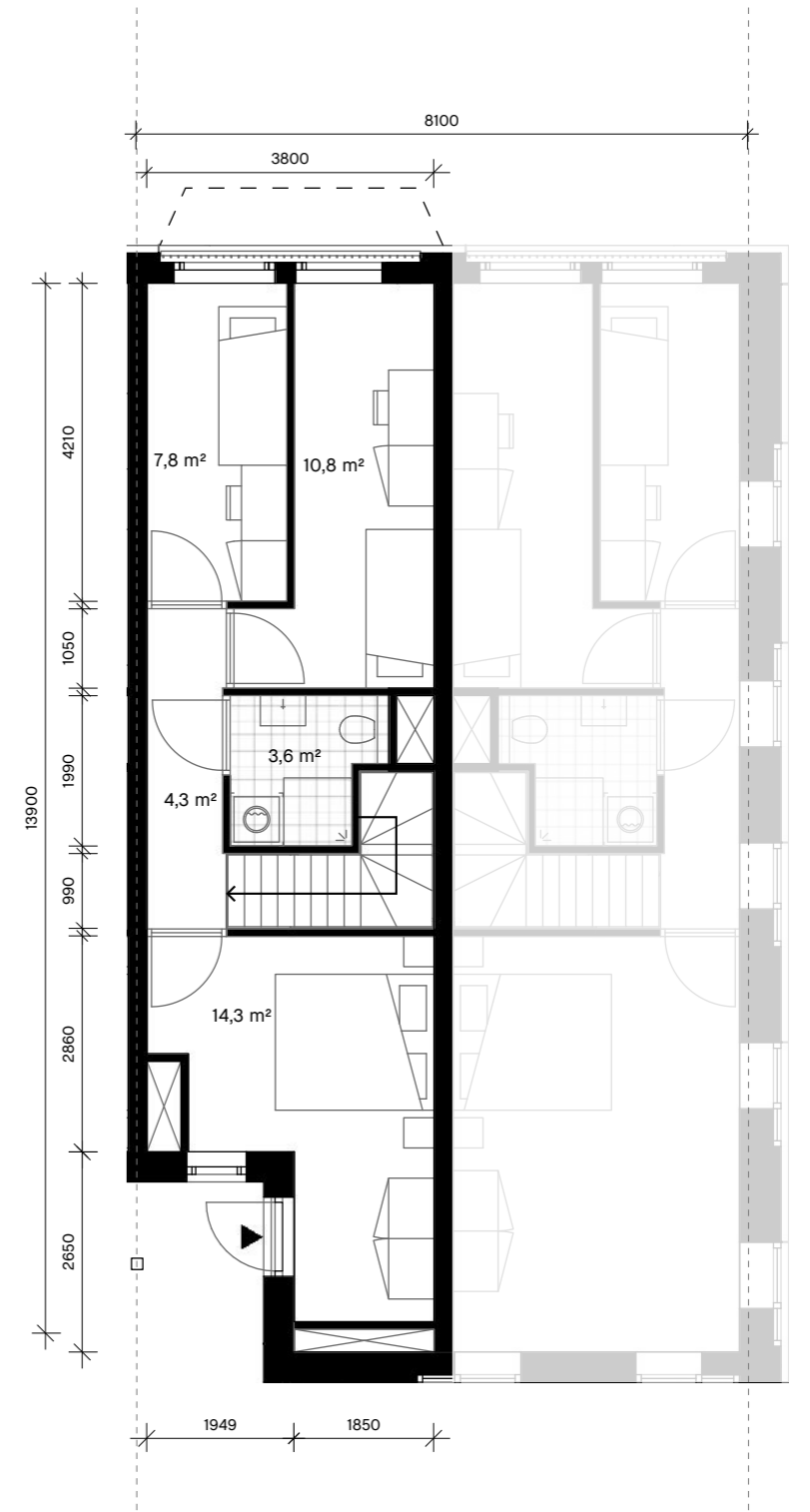
oppervlak

GO 79,6 m²
WO 66,8 m²

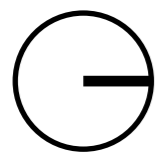
aantal 2 st.



begane grond

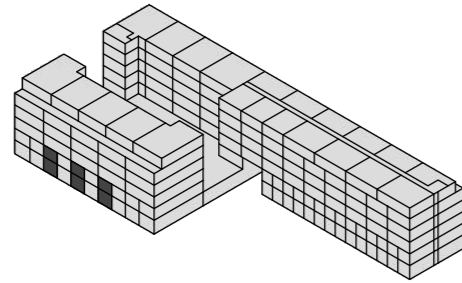


eerste verdieping



schaal 1:100

C2

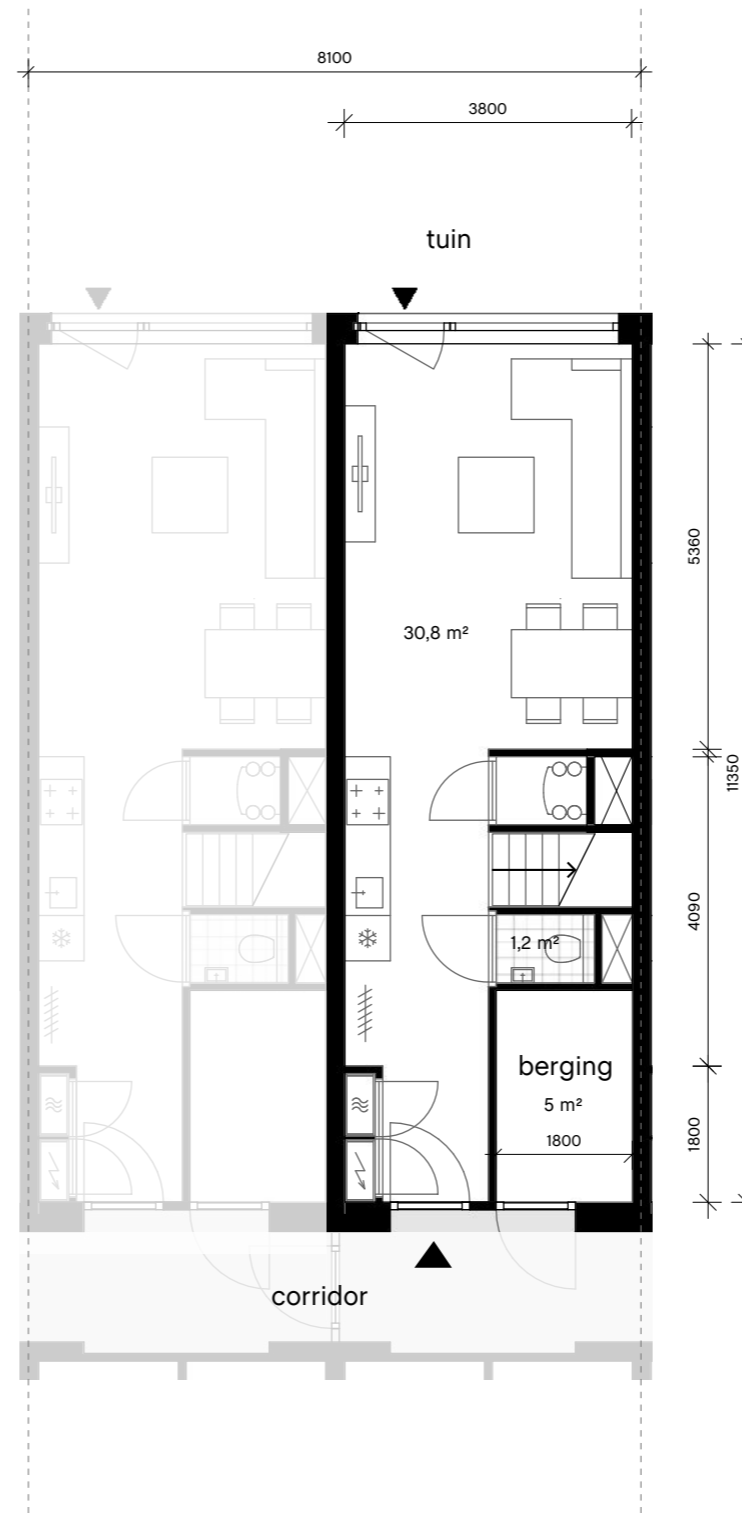


oppervlak

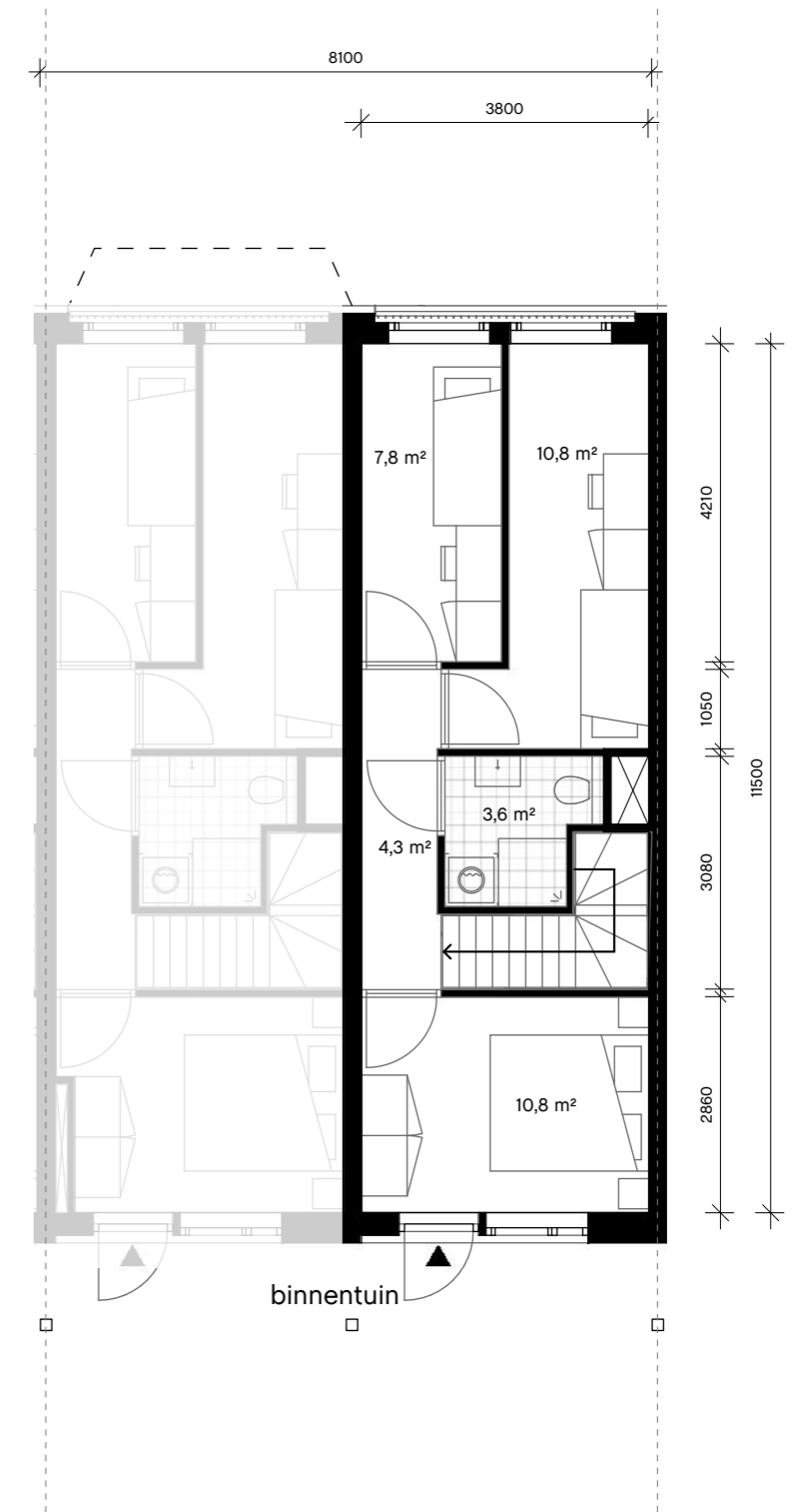
GO 76,6 m²

WO 63,8 m²

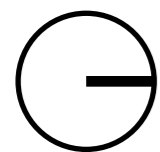
aantal 3 st.



begane grond

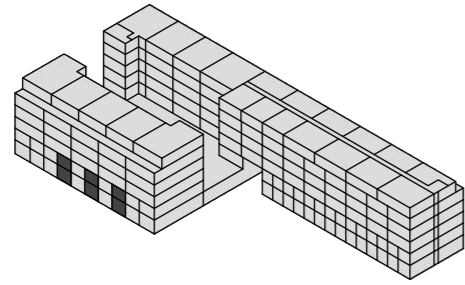


eerste verdieping



schaal 1:100

C3

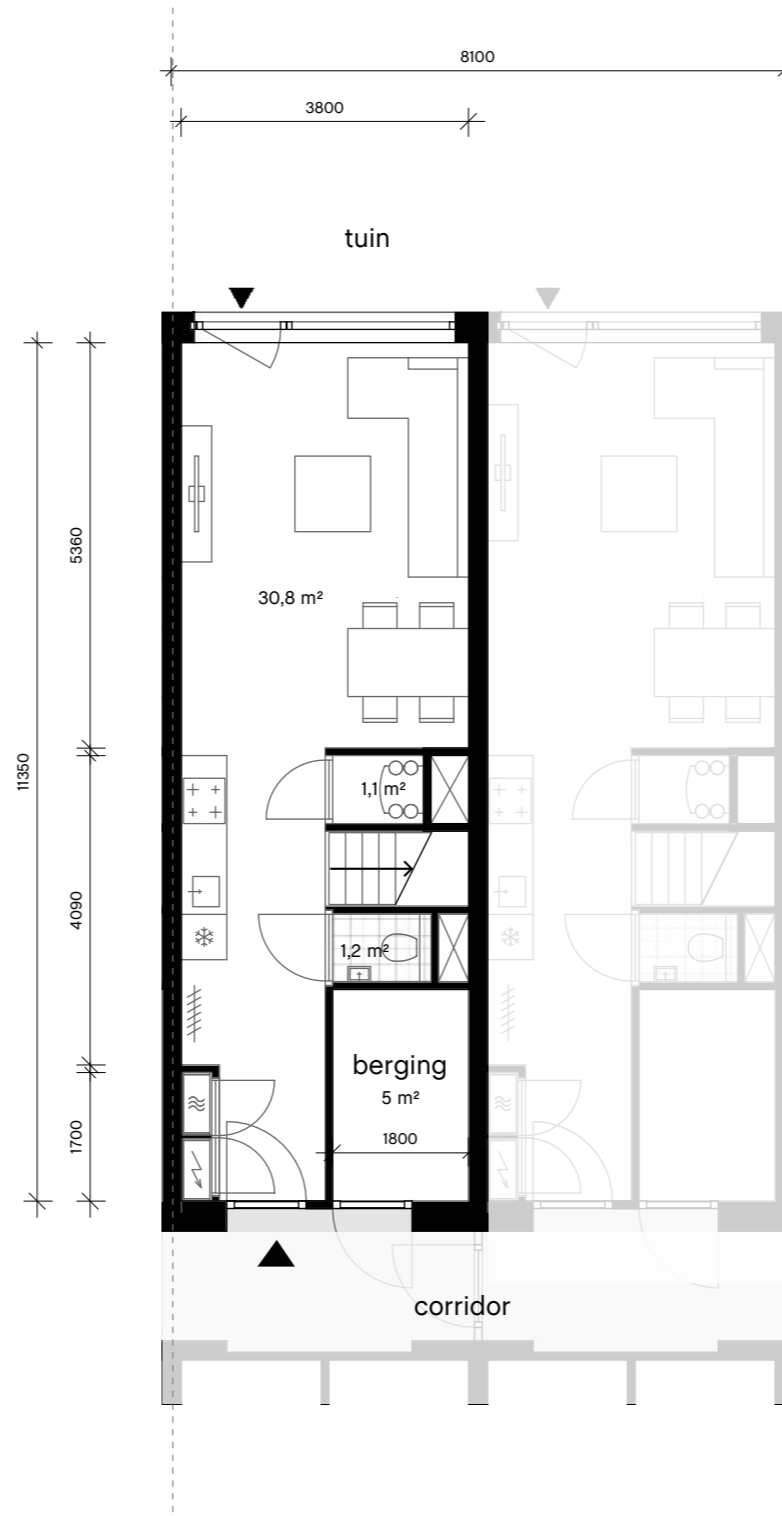


oppervlak

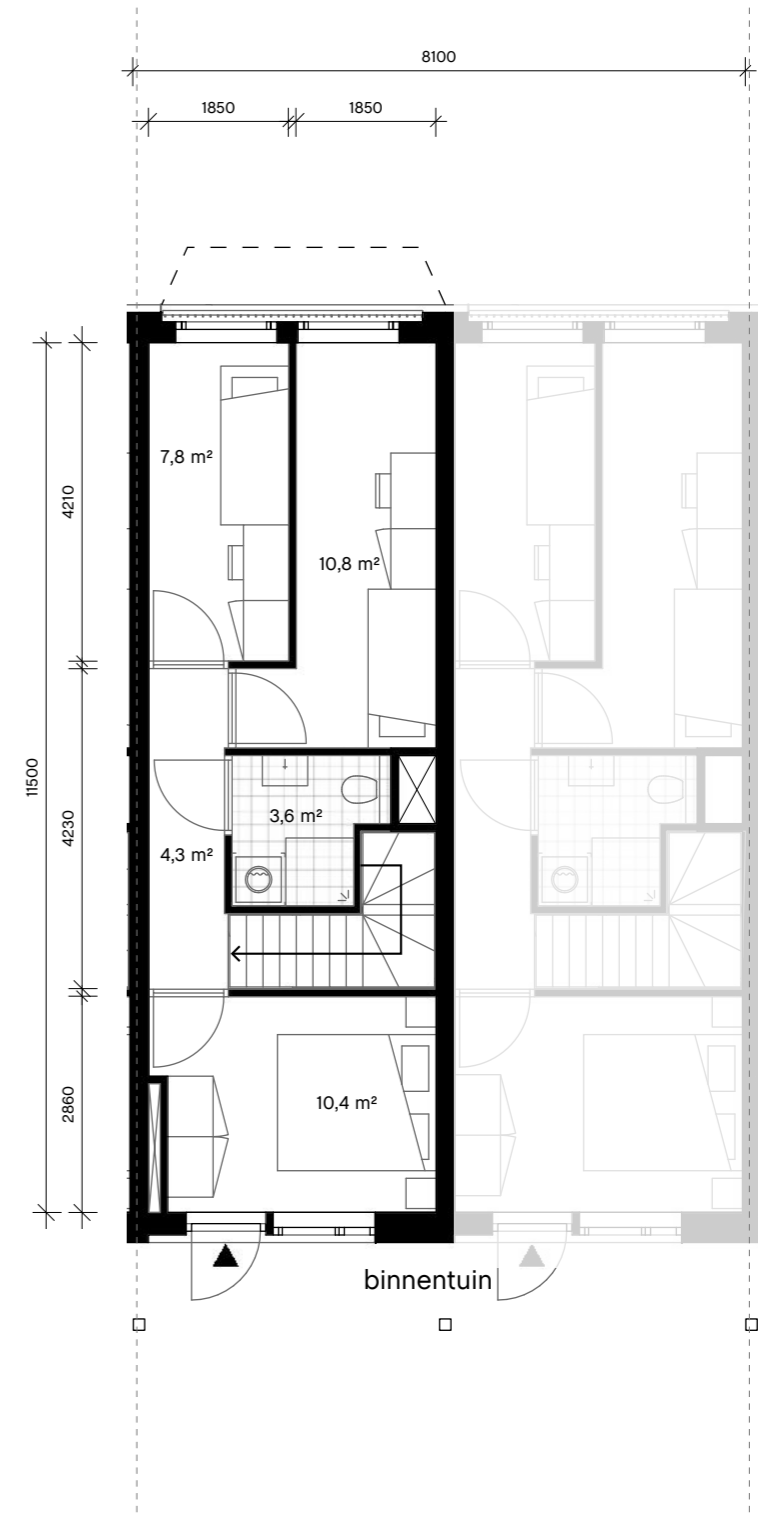
GO 76,2 m²

WO 63,4 m²

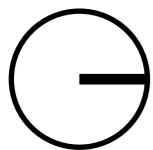
aantal 3 st.



begane grond



eerste verdieping

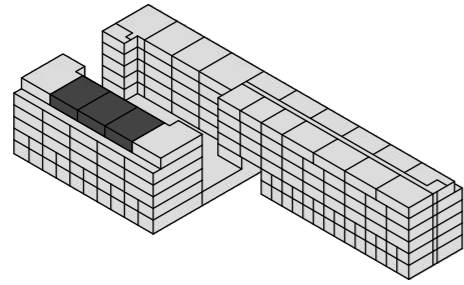


schaal 1:100



arons en gelauff
architecten

C4

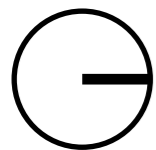
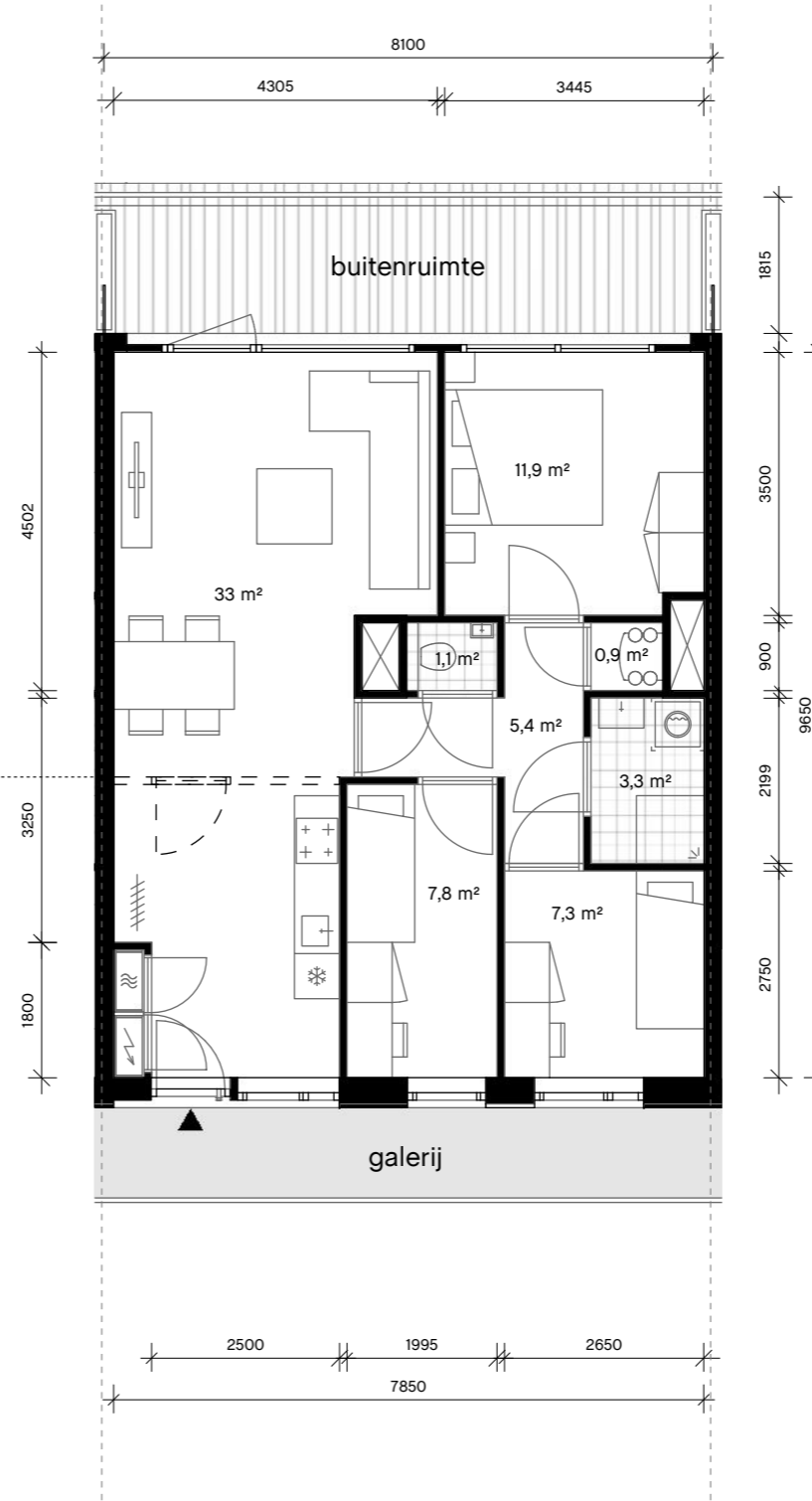


oppervlak

GO 74,2 m²

WO 63,3 m²

aantal 3 st.

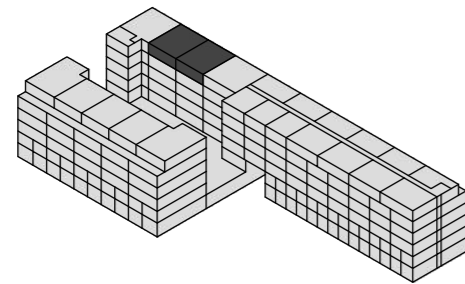


schaal 1:100



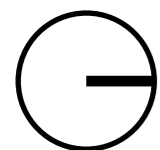
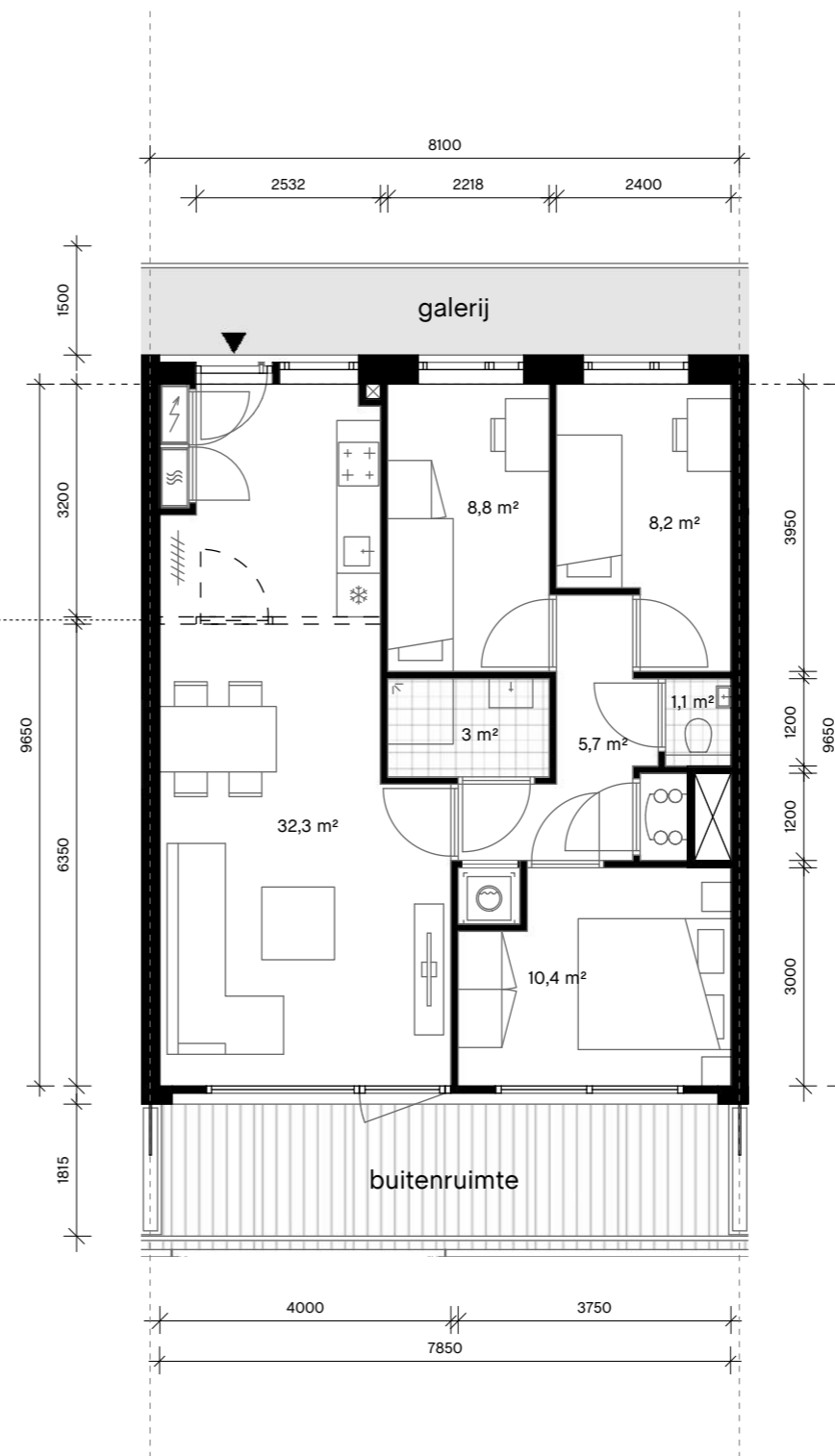
arons en gelauff
architecten

C5



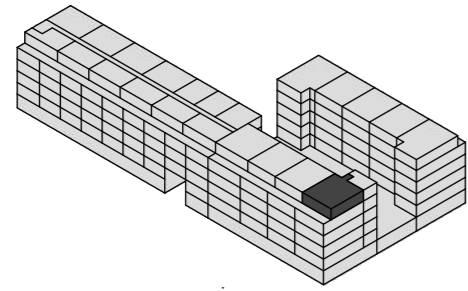
oppervlak
GO 74,9 m²
WO 62,7 m²
aantal 2 st.

Afschermen
keuken wordt als
optie aangeboden
door De Key.

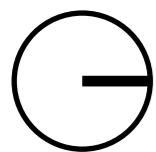
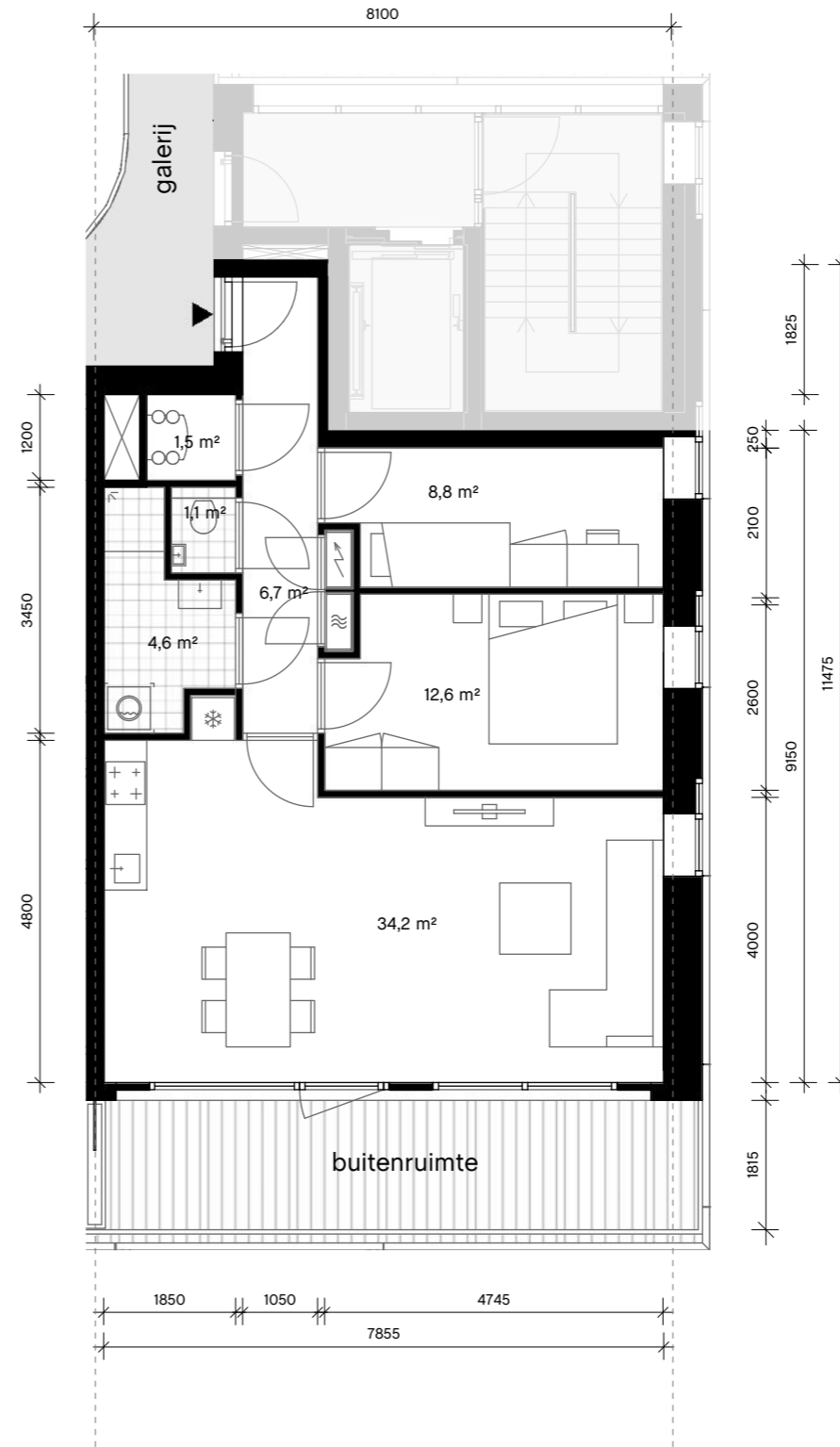


schaal 1:100

D1

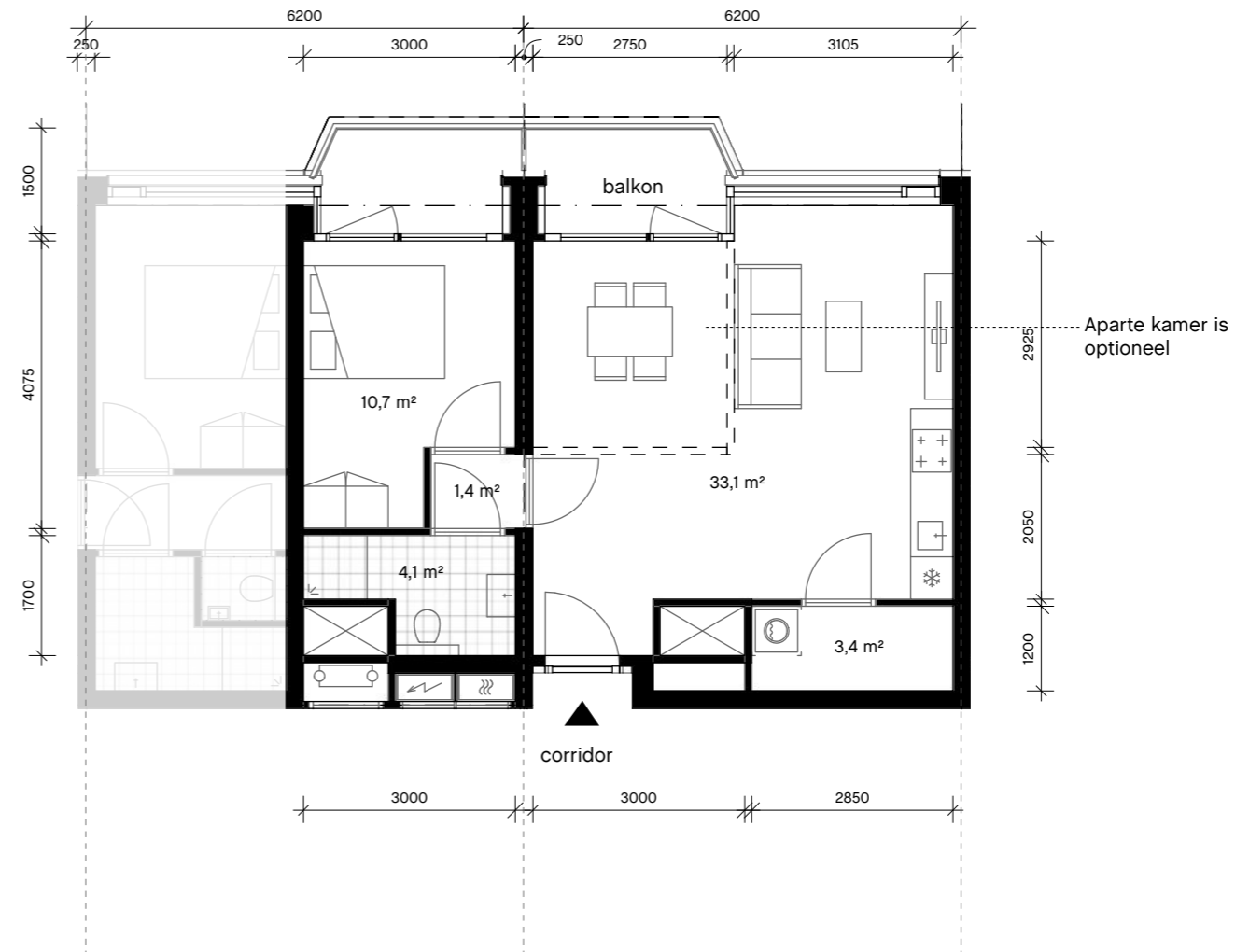
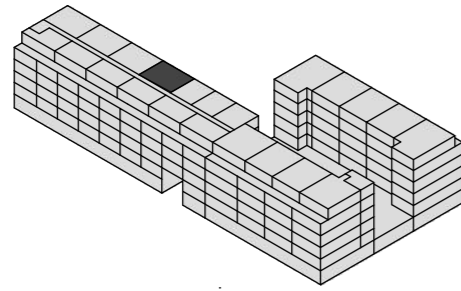


oppervlak	
GO	74,6 m ²
WO	60,2 m ²
aantal	1 st.



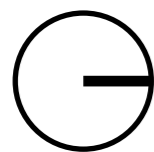
schaal 1:100

D2



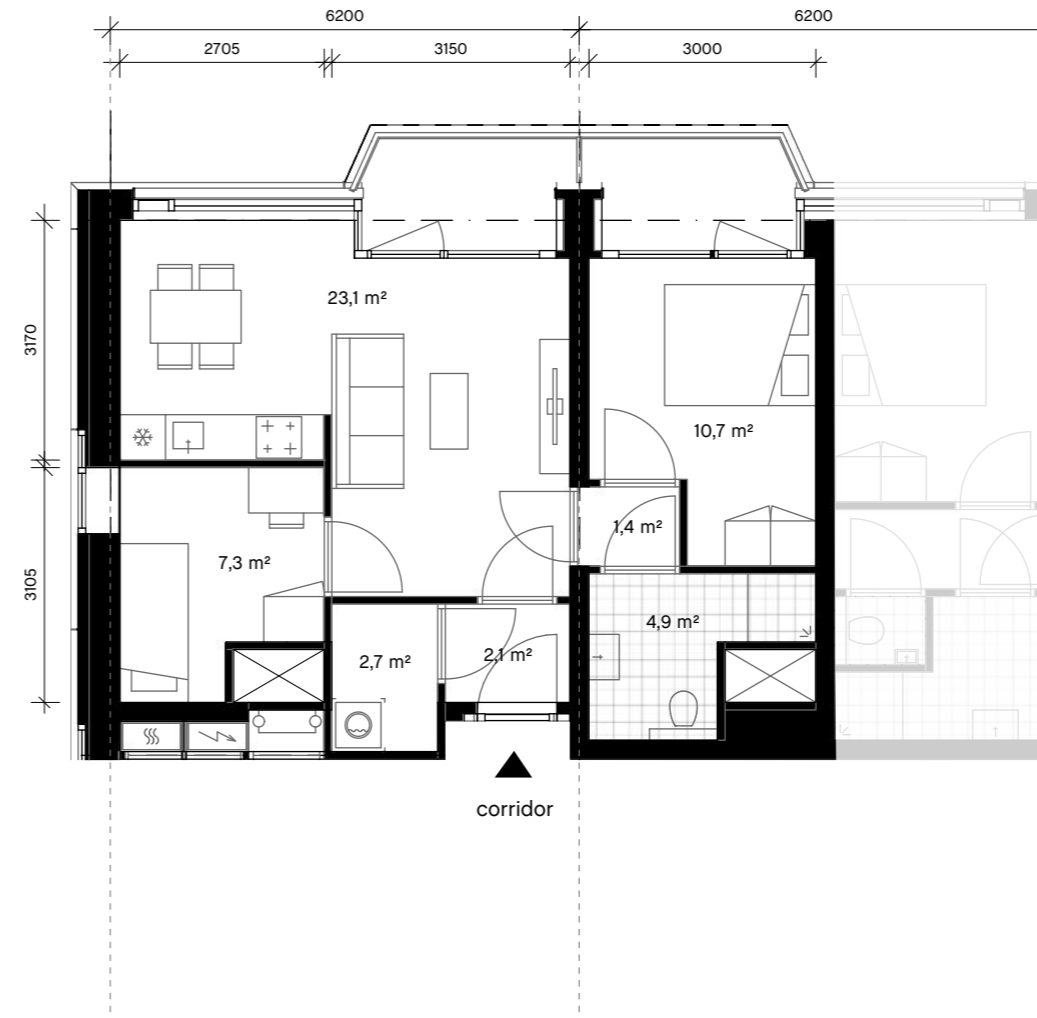
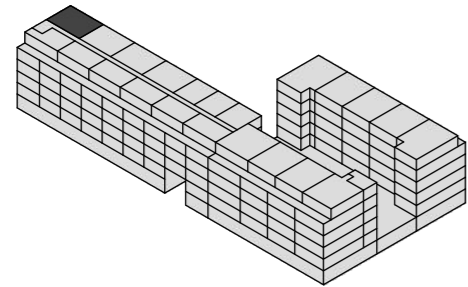
oppervlak	
GO	55,6 m ²
WO	47,9 m ²
aantal	1 st.

*WTW en meterkasten zijn bereikbaar vanuit de corridor.



schaal 1:100

D3



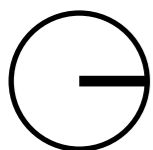
oppervlak

GO 55,3 m²

WO 46,0 m²

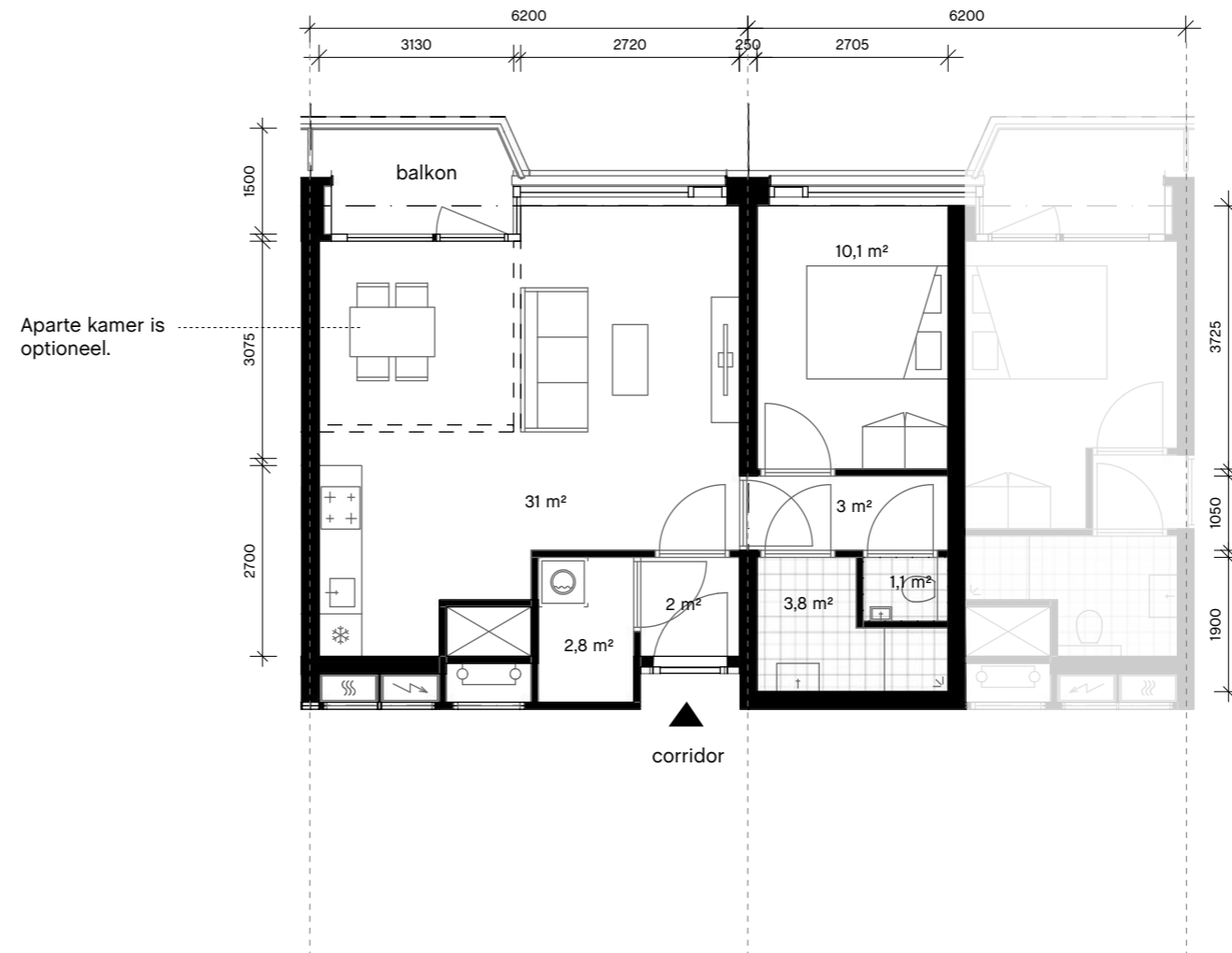
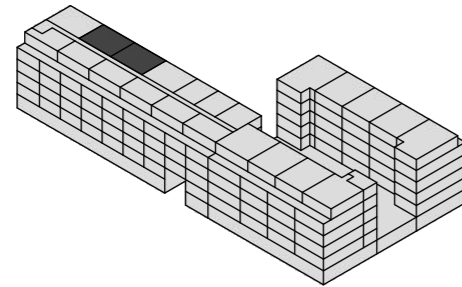
aantal 1 st.

*WTW en meterkasten zijn bereikbaar vanuit de corridor.



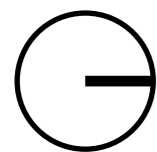
schaal 1:100

D4



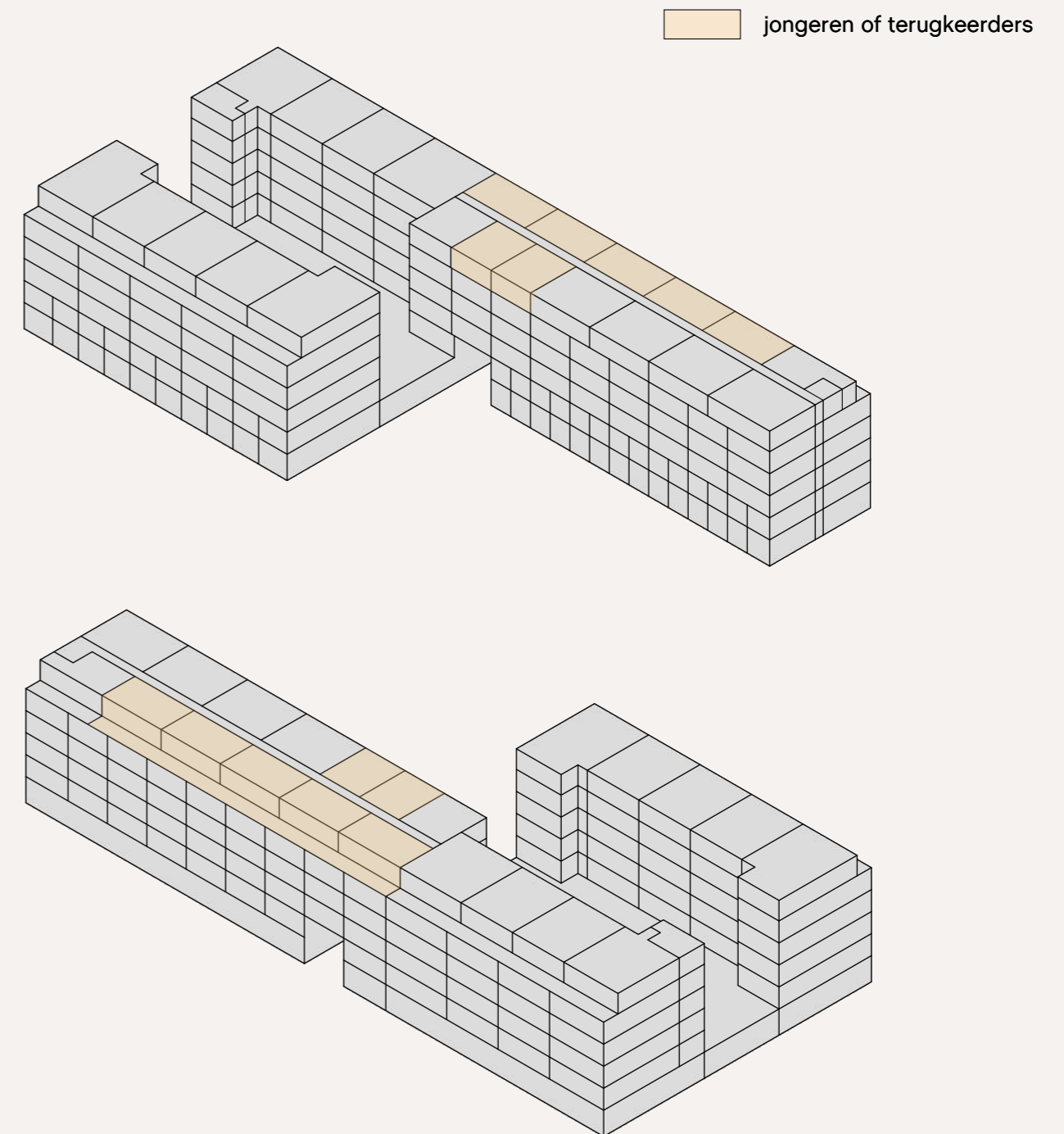
oppervlak	
GO	56,5 m ²
WO	44,9 m ²
aantal	2 st.

*WTW en meterkasten zijn bereikbaar vanuit de corridor.

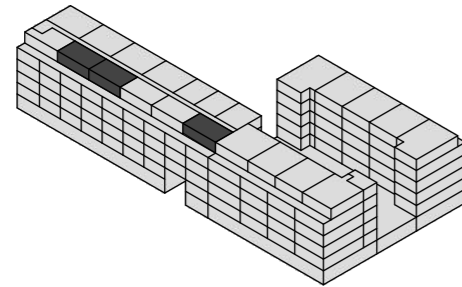


schaal 1:100

Van de volgende zeven woningen zijn er vier beschikbaar voor terugkeerders.

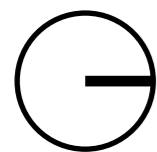


E1



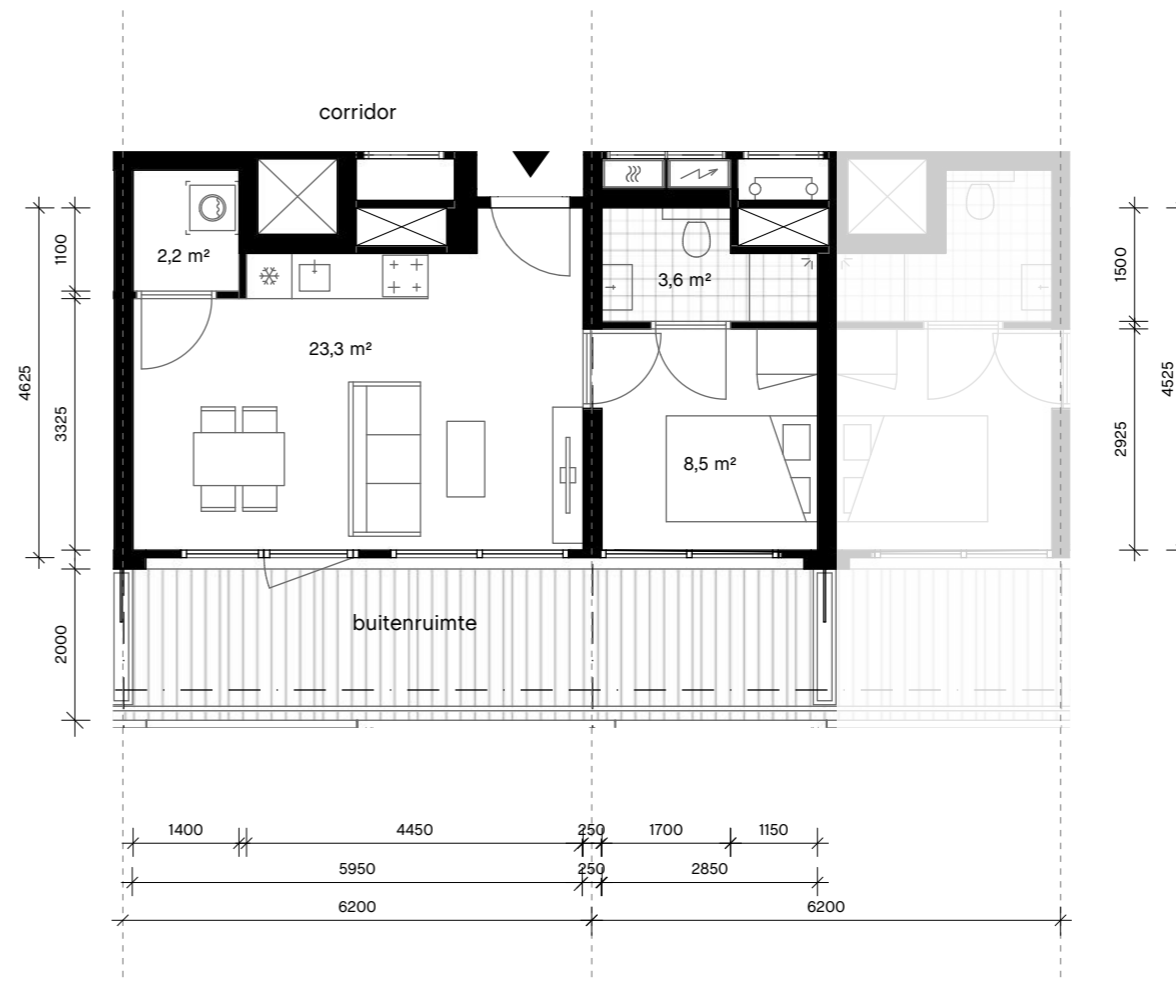
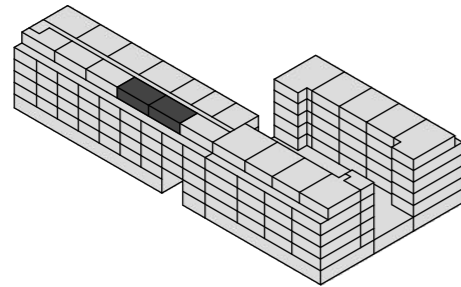
oppervlak	
GO	39,6 m ²
WO	35,7 m ²
aantal	3 st.

*WTW en meterkasten zijn bereikbaar vanuit de corridor.



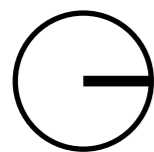
schaal 1:100

E2



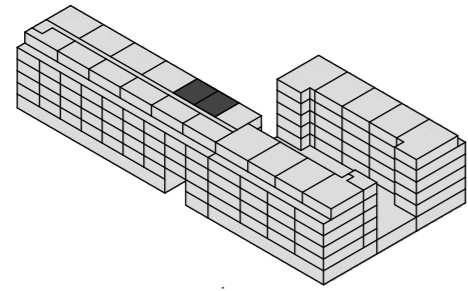
oppervlak	
GO	40,3 m ²
WO	35,4 m ²
aantal	2 st.

*WTW en meterkasten zijn bereikbaar vanuit de corridor.



schaal 1:100

E3

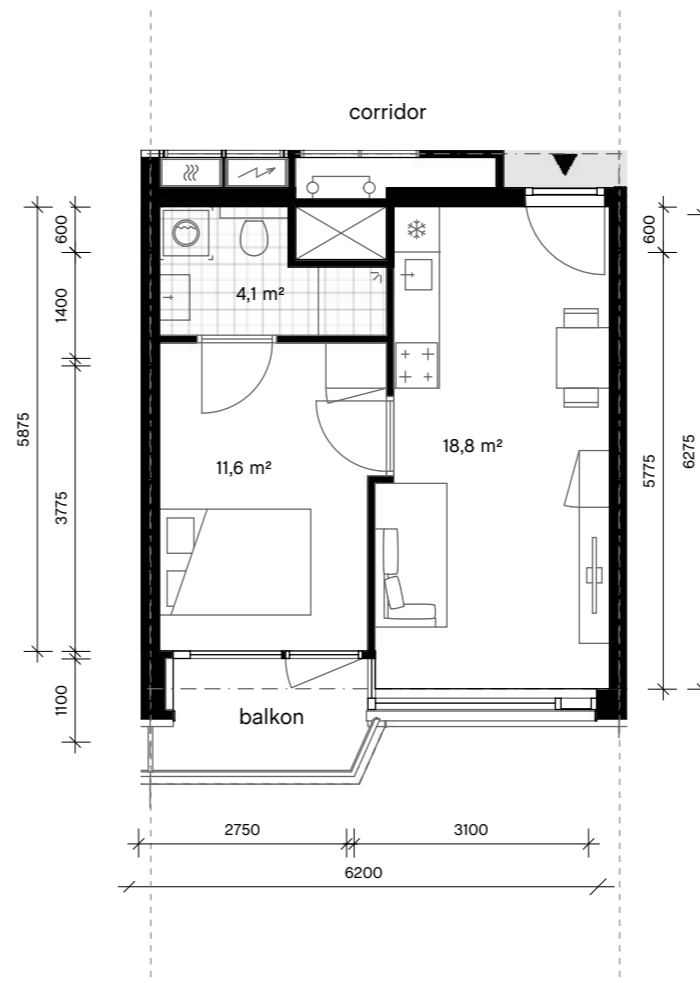


oppervlak

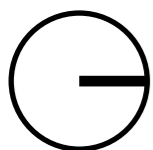
GO 37,4 m²

WO 34,5 m²

aantal 2 st.



*WTW en meterkasten zijn bereikbaar vanuit de corridor.



schaal 1:100











colofon

Arons en Gelauff architecten

Gedempt Hamerkanaal 92

1021 KR Amsterdam

The Netherlands

t +31 20 423 55 30

mail@aronsengelauff.nl

aronsengelauff.nl

© arons en gelauff architecten

Woonstichting Lieven de Key

Hoogte Kadijk 179 020 621 43 33
1018 BK Amsterdam lievendekey.nl

arons en gelauff architecten
020 423 55 30

Lieven de Key